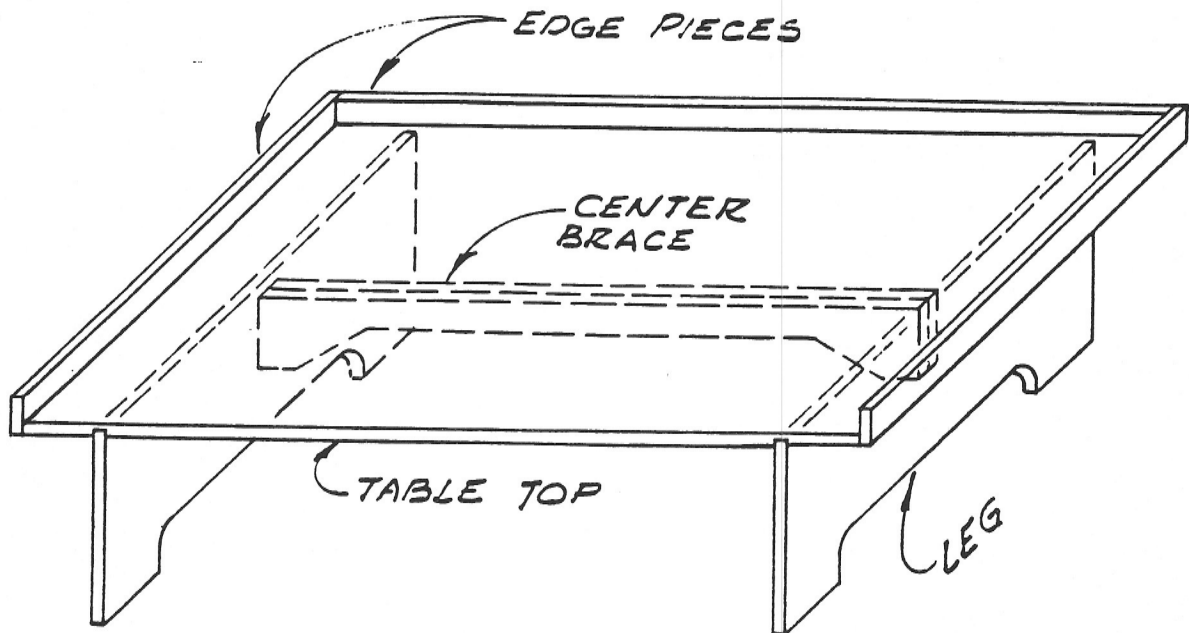


### FLOOR TABLES

These are small 23-7/8" x 12" tables of varying heights and light weight. The single small underside brace permits a child to put legs and feet underneath while seated on the floor. The material is 3/8" plywood. The tables are glued and nailed together, then finished with three coats of Varathane varnish. A cutting scheme for making six tables of varying heights is on the next page.



FLOOR TABLE ASSEMBLY

FLOOR TABLES

Materials needed for one table of each height:

- One 4' x 8' x 3/8" sheet of birch plywood,  
cut to sizes shown on cutting scheme drawing
- Elmer's Carpenter Glue
- 1" x #17 wire brads
- Varathane gloss varnish

Tools needed:

- Table saw
- Sander
- Fine sandpaper
- Hammer
- Ruler
- Square
- Brush



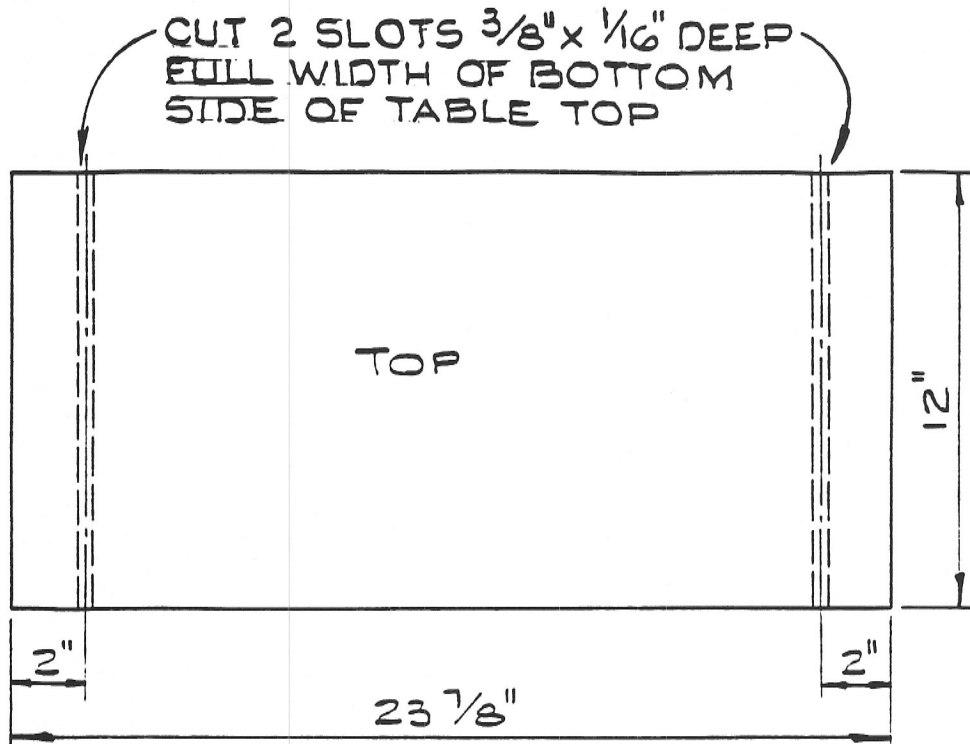
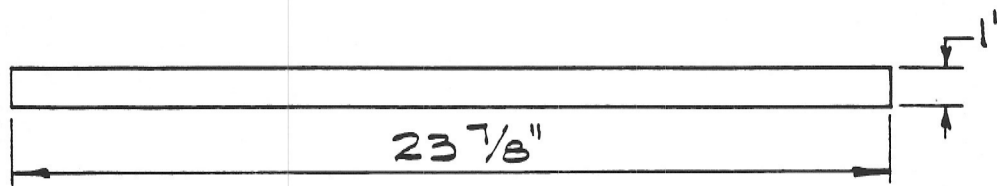
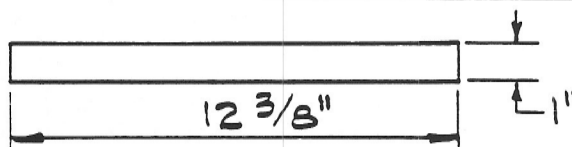


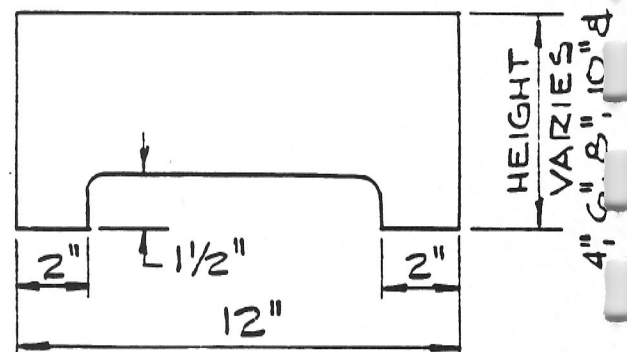
TABLE TOP



EDGE PIECE

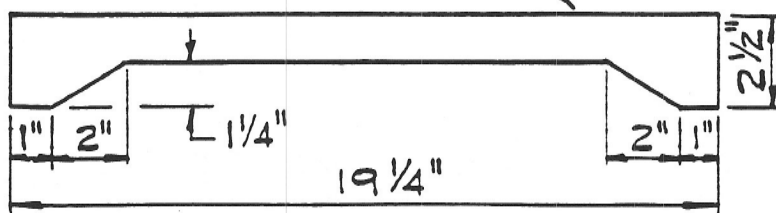


EDGE PIECE



LEG

FOR CENTER BRACE, GLUE  
TWO PIECES OF PLYWOOD  
SHEETS TOGETHER AND  
CUT AS SHOWN



CENTER BRACE

## FLOOR TABLES

### CUTTING SCHEME DETAIL

This cutting scheme is to cut out one 4" high, one 6", one 8", one 10", one 12" and one 14" high floor tables. We suggest the following cutting sequence to avoid difficulties with the amount of wood removed by the saw cut: make six cuts of full 12" starting from the left. Cut the first three across to give six pieces 12" by 23-7/8". Then cut the next two to get pairs of legs of 4", 6", 10", 12", and 14". Cut the sixth 12" strip to give a pair of 8" legs, then cut six pairs of 1" edge pieces that are 12-3/8" long. Finally, cut the 12 pieces that will become the six center braces.

### CONSTRUCTION SUGGESTIONS

Use 3/8" plywood, as it is strong yet light in weight. The ideal plywood is "Baltic Birch," made in Finland of seven plies of birch veneer. Quite satisfactory is U.S.-made birch plywood. A-A grade fir plywood is also satisfactory, but requires more sanding, especially the ends and corners.

Cut out pieces according to the cutting scheme, remembering where the saw kerf will occur. Glue the two brace pieces together for each table, then make the underside cuts that will provide leg clearance. Using a saber saw, make the "feet" on the side pieces. The 1/16" deep x 3/8" wide slots cut across the underside of each table top are not an absolute requirement, but they do assure a squared assembly and perhaps additional stability.

Sand all pieces well before assembly.

Assemble the table beginning with the long edge piece on the tabletop, then the edge pieces along the sides. Use Elmer's Carpenter Glue or equivalent with 1" x #17 wire brads. The brads hold the parts together until the glue does its work. Now sand the corners to remove all sharp angles. Glue and nail (same size brads) both side pieces into their slots. Finally, glue and nail the center brace in place. Conclude the assembly by sanding the corners of the feet.

Varnish using three coats of Varathane gloss varnish, sanding lightly between coats.