

BUSY BOX

This electronic busy box has several unique features that make it ideal for a child with physical disabilities:

1. Only a light touch is necessary to activate any of the four panels.
2. The box is not very deep, so even a child who has difficulty extending his arms will be able to reach each activity area.
3. The texture of each panel is different, thereby providing tactile stimulation and enjoyment.

The first pad on the left is a simulated door, which activates an electronic chime when pressed. The second pad is an acrylic mirror with two lights and a buzzer, which is activated by pressing the mirror. The third pad is a vibrator, activated by pressing down. The fourth pad on the right is covered with a piece of short- nap carpet. When pressed down, it activates the circuit board to produce a melody.

This BUSY BOX requires four "C" batteries and one "AA" battery (on the circuit board). A cushion foot placed on each corner of the bottom will prevent marking table tops (Radio Shack #64-2346).

BUSY BOX

Materials needed for one Busy Box:

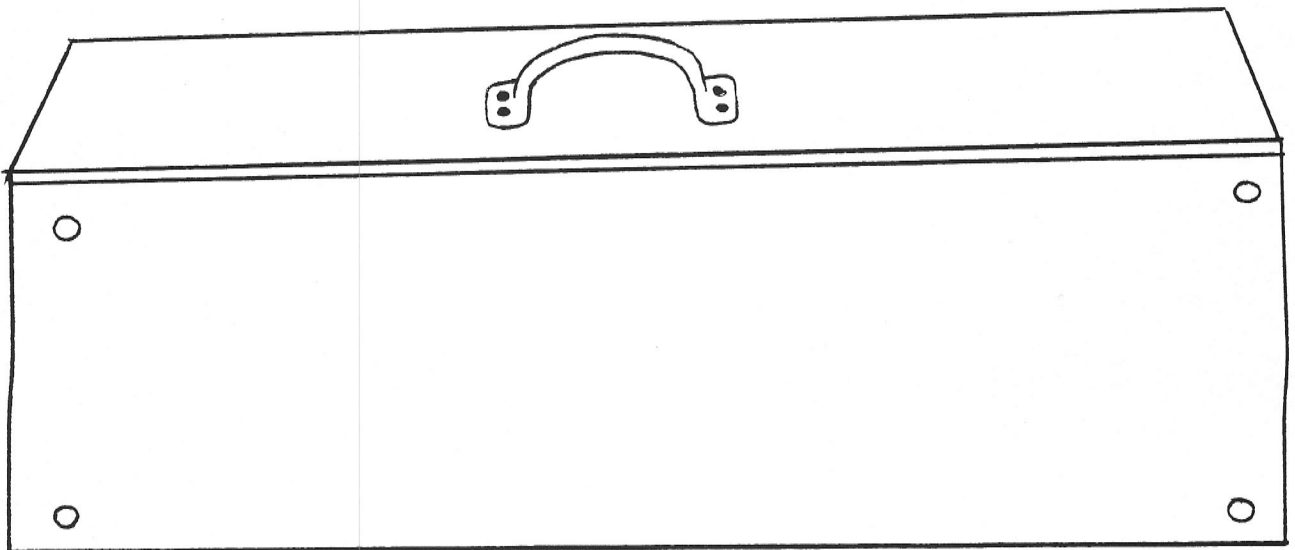
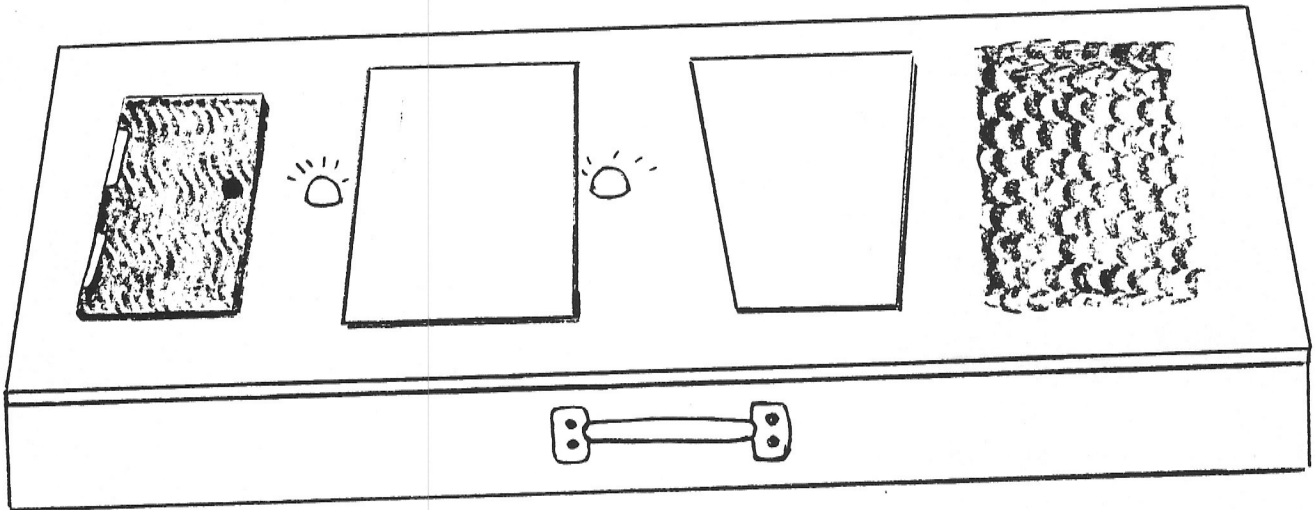
- 18" x 22½" x 3/8" birch plywood, cut to sizes and with bevels and angles as shown in drawings
- 4" x 4" x ¼" foam sponge)
- 4" x 4" x 3/8" foam sponge) Cut to various sizes
- 4" x 4" x 3/4" foam sponge) as shown on drawings
- 2" x 2" 16-mesh screen, plastic or wire
- 4 rubber bumpers - 3/8" or ½" (for feet)
- 3-7/8" x 2¼" x 3/16" plywood)
- 4½" x 3¼" x 3/32" acrylic mirror)Drill holes
- 4¼" x 3-3/8" to 2-5/8" x ¼" clear Plexiglas)and attach
- 4" x 2-5/8" x 3/16" plywood)sponge as shown
- 4" x 2-5/8" short-nap carpeting)on drawings
- 8 pan head sheet metal screws, each 3/4" x #8
- 8 soft rubber washers, each 3/8" diameter
- 2" x 2" piece of ¼" clear lexan plastic
- Hot melt glue
- Plexite cement (to bond lexan)
- Elmer's Carpenter Glue
- 1" x #17 wire brads
- 4 flathead Phillips screws, each 1" x #6
- Varathane gloss varnish
- 2 battery holders: Radio Shack #270-385 for two C-size batteries
- 1 speaker: 2¼" Radio Shack #40-246
- 1 motor: Radio Shack #273-222
- 4 "C" batteries
- 1 flashlight lamp, PR-2: Radio Shack #272-1120
- 1 "AA" battery
- 1 buzzer: Radio Shack #273-053
- 1 electronic chime: Radio Shack #273-067
- #20 gauge wire: Radio Shack #278-1307
- 4 "Alco" catalog 3P-119 "John Meshua, Jr., Inc., Surplus Electronic Material," P.O. Box 62, East Lyn, Massachusetts 01904
- 1 circuit board #CB 7910-7910, Melody IC 7910-7910 CE S MOS Systems, Inc., 50 West Brokaw Road, Bldg 7, San Jose, California 95110
- Miscellaneous metal strips and small wood blocks with small mounting screws, rosin core solder, window sash handle

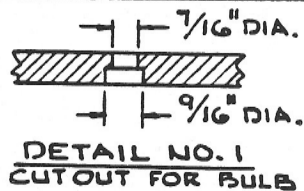
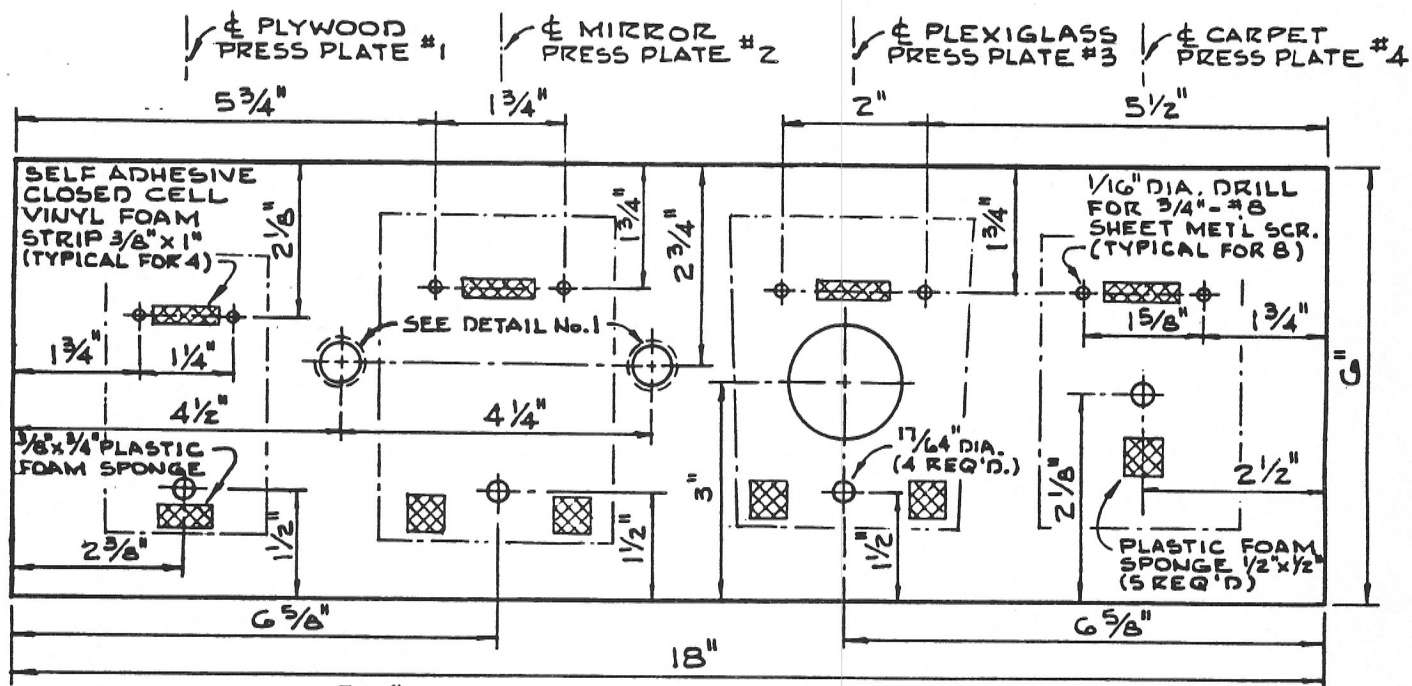
BUSY BOX

Tools needed:

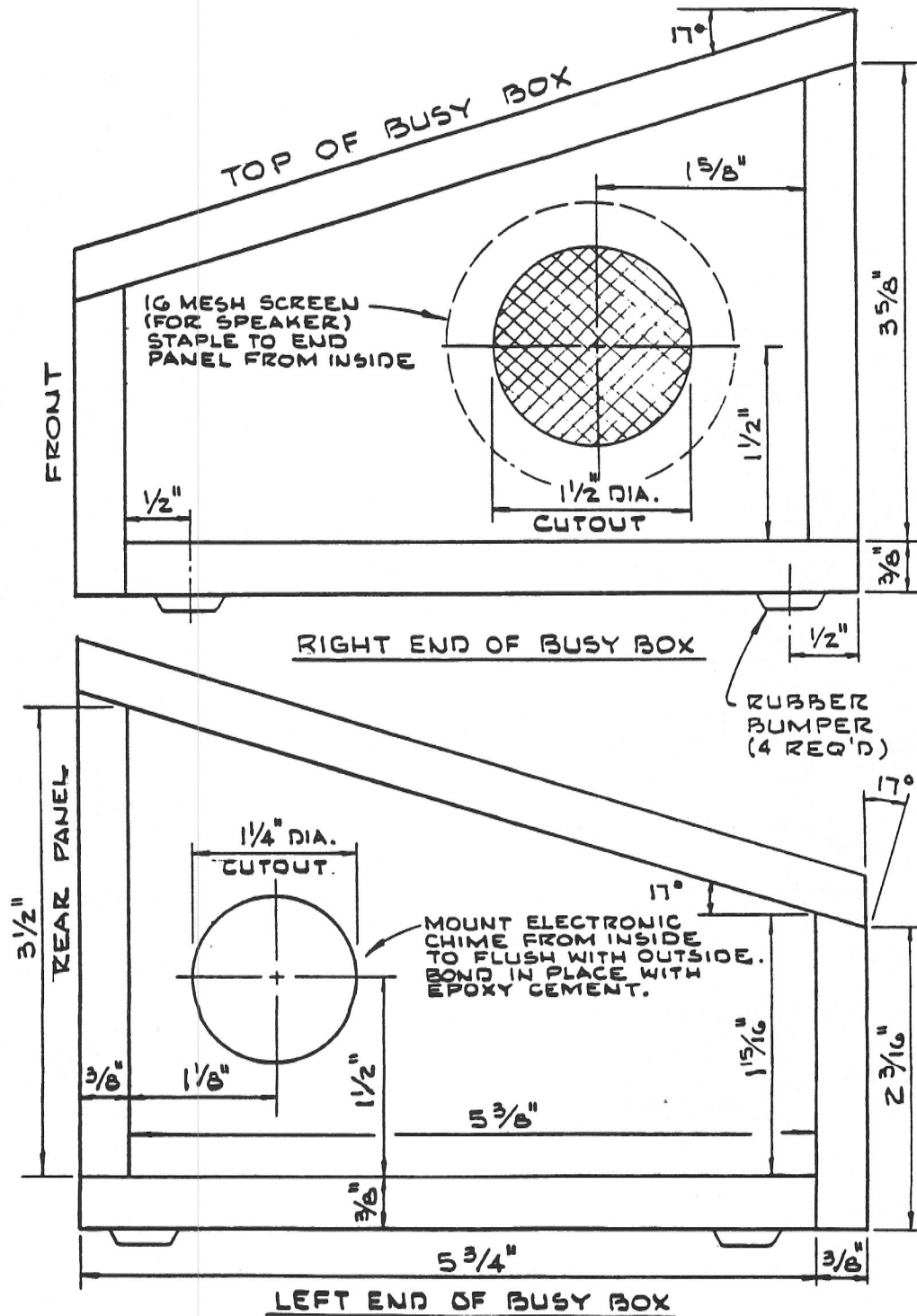
- table saw
- sander
- fine sandpaper
- set of drill bits
- electric drill
- hot melt glue gun
- small soldering iron
- hammer
- ruler
- square
- brush
- scissors
- pliers
- screwdriver
- knife

BUSY BOX





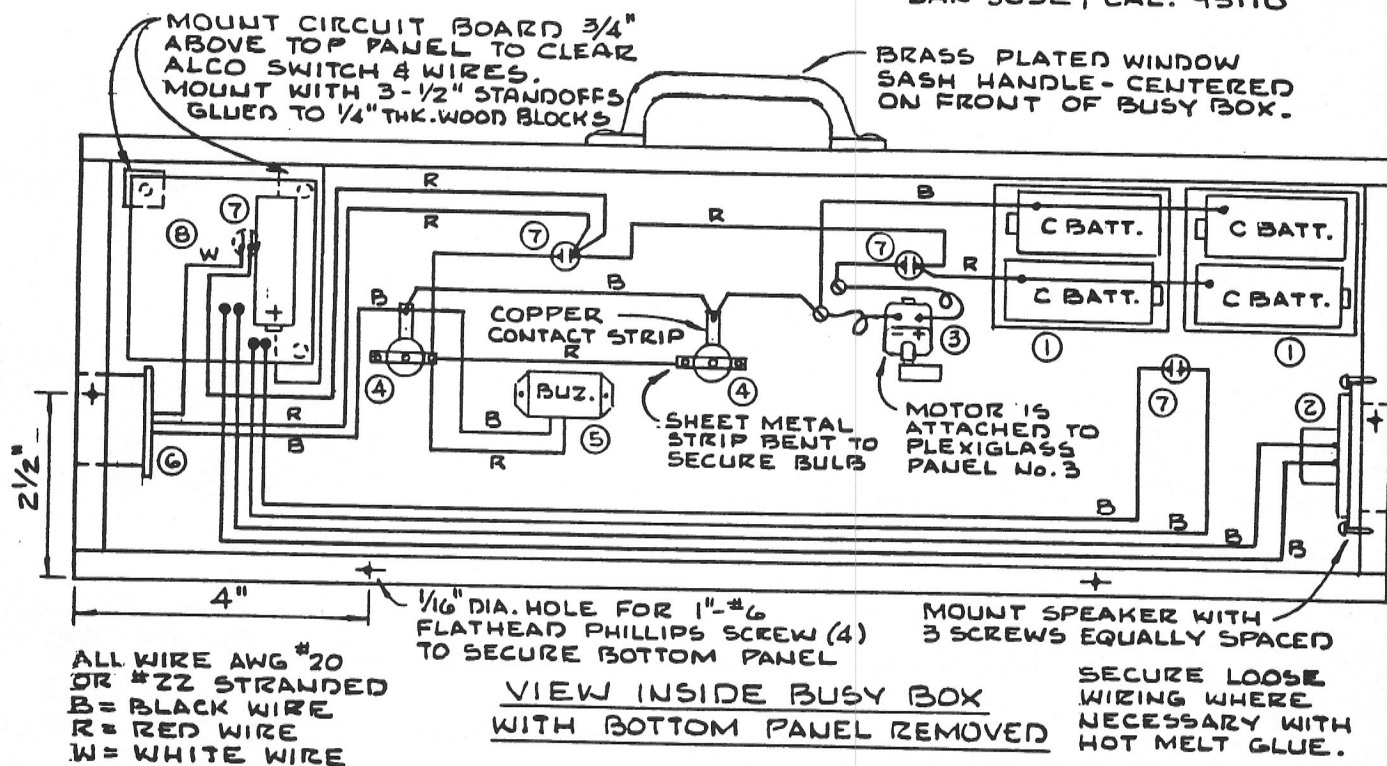
TOP PANEL LAYOUT



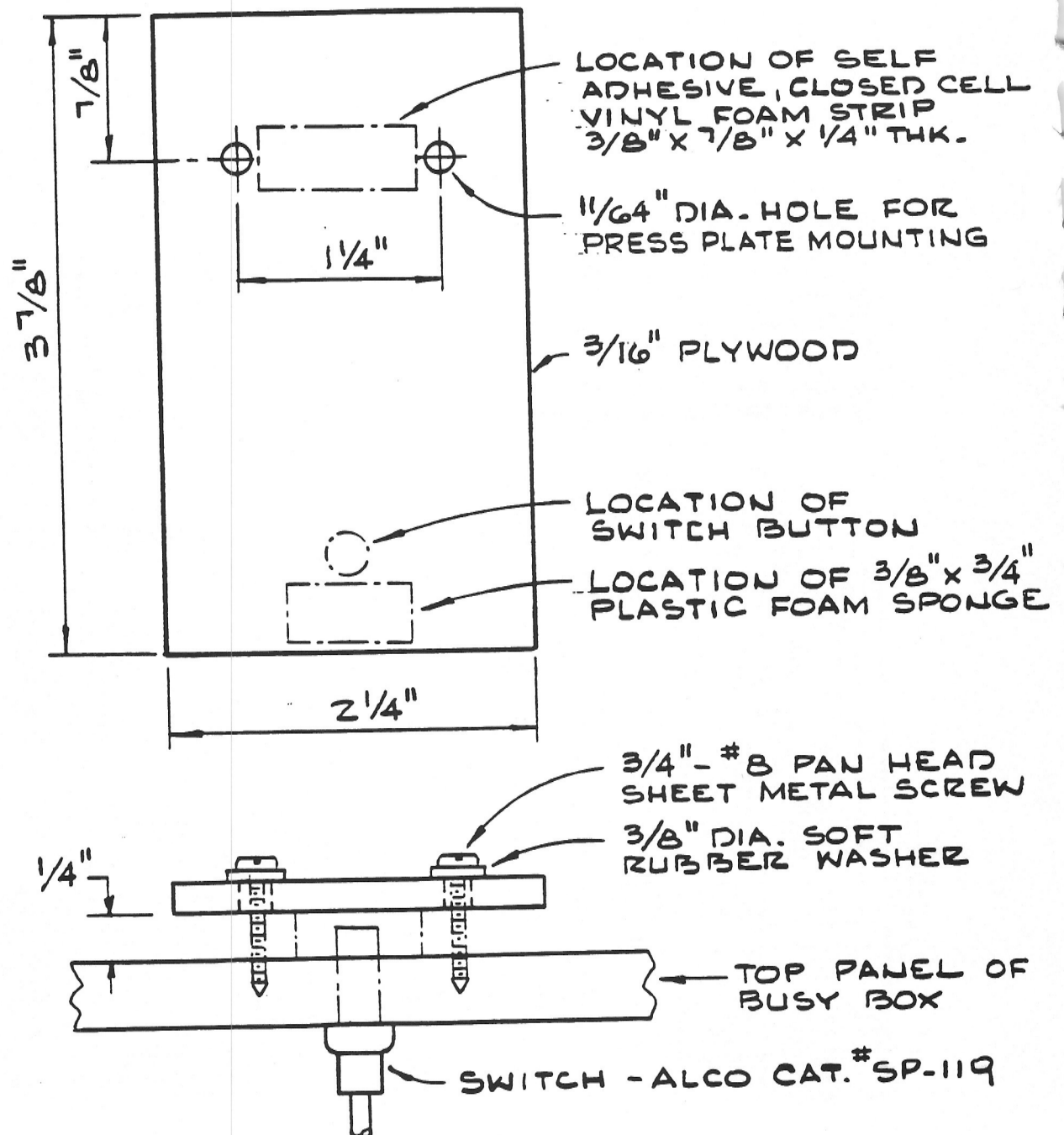
LIST OF MATERIALS

- ① BATTERY HOLDER (2) RADIO SHACK #270-385
4 C SIZE BATTERIES
- ② SPEAKER, 2 1/4" RADIO SHACK #40-246
- ③ MOTOR, RADIO SHACK #273-222
- ④ FLASHLIGHT LAMP PR-2
RADIO SHACK #272-1120
- ⑤ BUZZER, RADIO SHACK #273-053
- ⑥ ELECTRONIC CHIME, RADIO SHACK #273-067

- ⑦ SWITCH (4), ALCO. CAT. SP-119
JOHN MESHNA, JR. INC.
SURPLUS ELECTRONIC MAT'L.
P.O. BOX 62
EAST LYNN, MASS. 01904
- ⑧ CIRCUIT BOARD #CB7910
7910 MELODY IC #7910-7910-CE
S MOS SYSTEMS, INC.
50 W. BROKAW RD. BLDG. 7
SAN JOSE, CAL. 95110

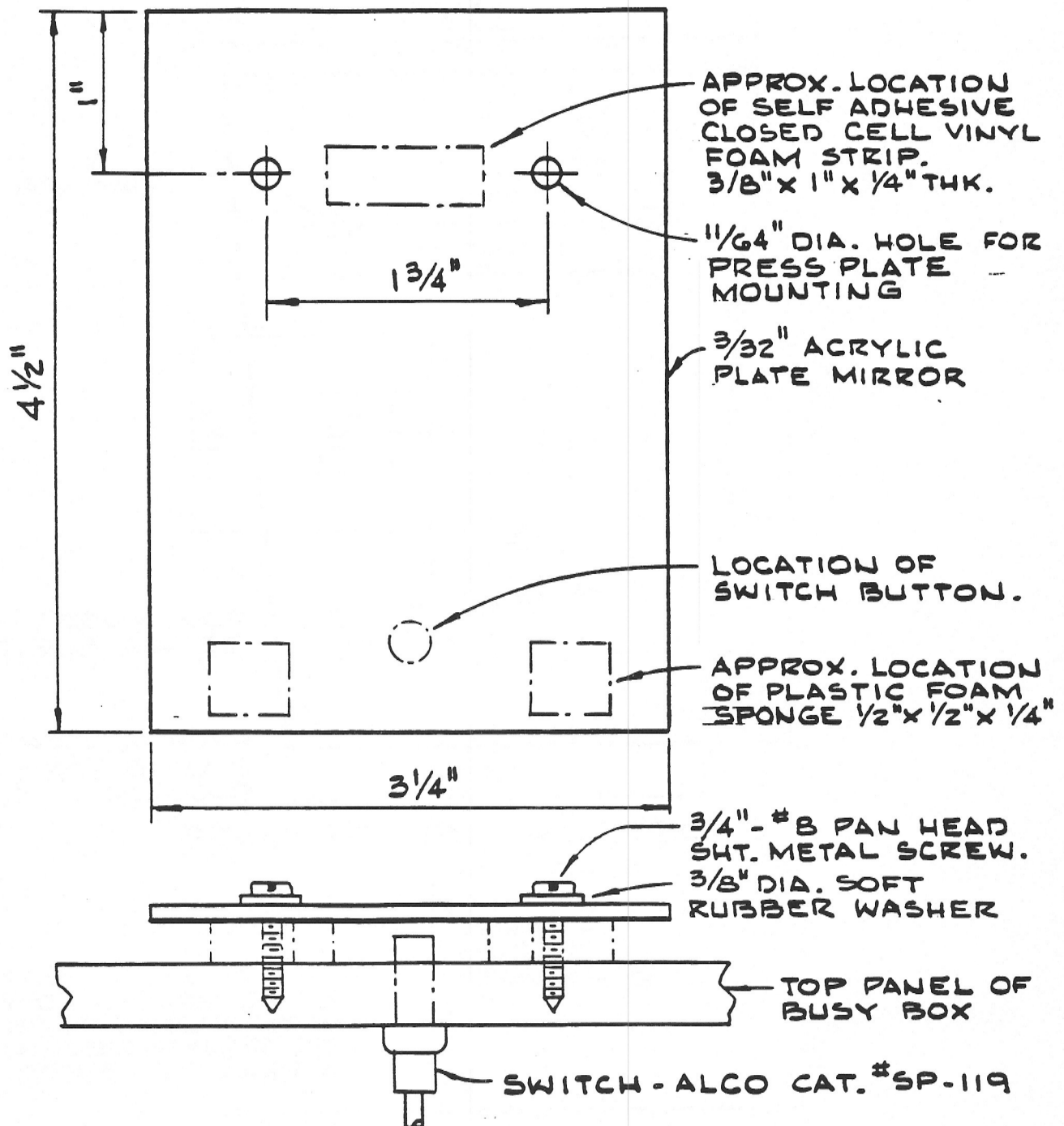


BUSY BOX



DETAIL OF PLYWOOD PRESS PLATE No.1

BUSY BOX



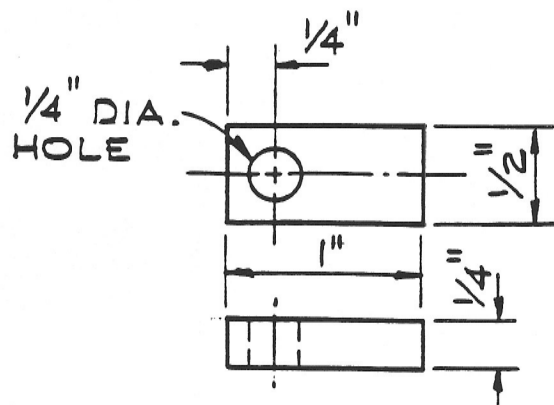
DETAIL OF MIRROR PRESS PLATE No.2



MOTOR MOUNT - LEXAN

DETAIL OF PLEXIGLASS PRESS PLATE No.3

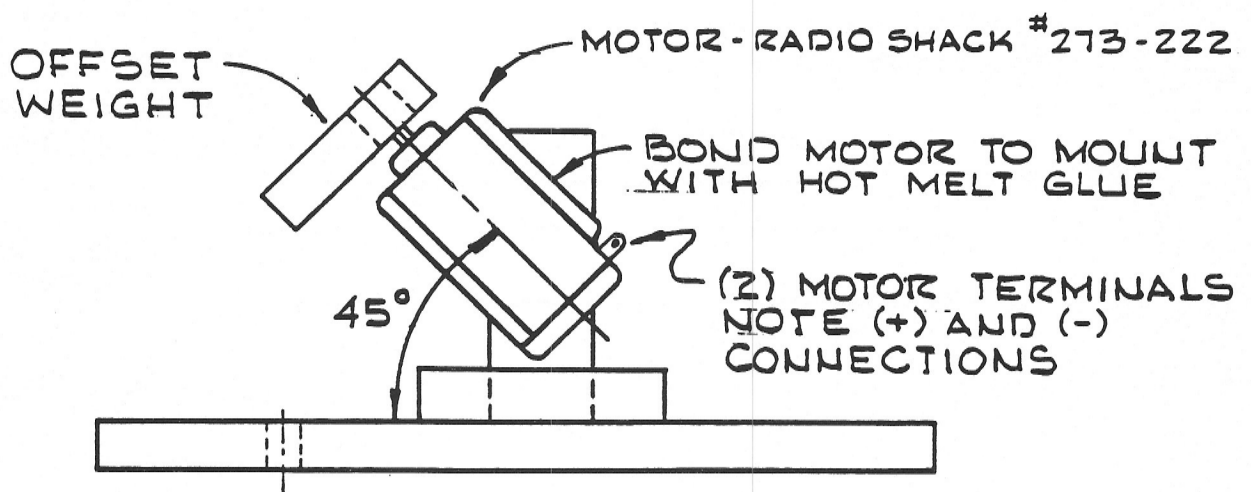
BUSY BOX



MATERIAL: 1/4" LEXAN
(POLICARBONATE)

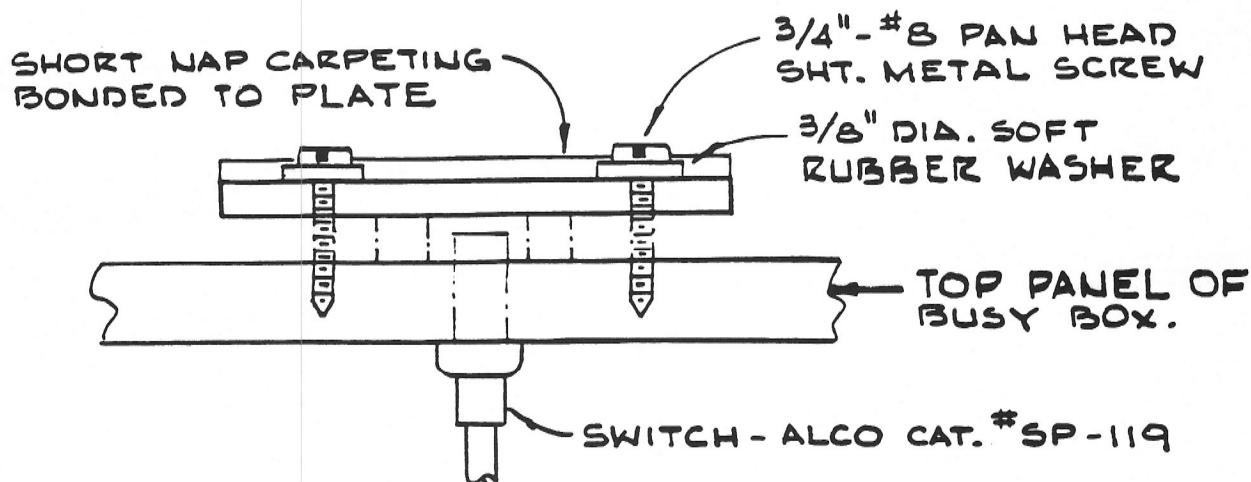
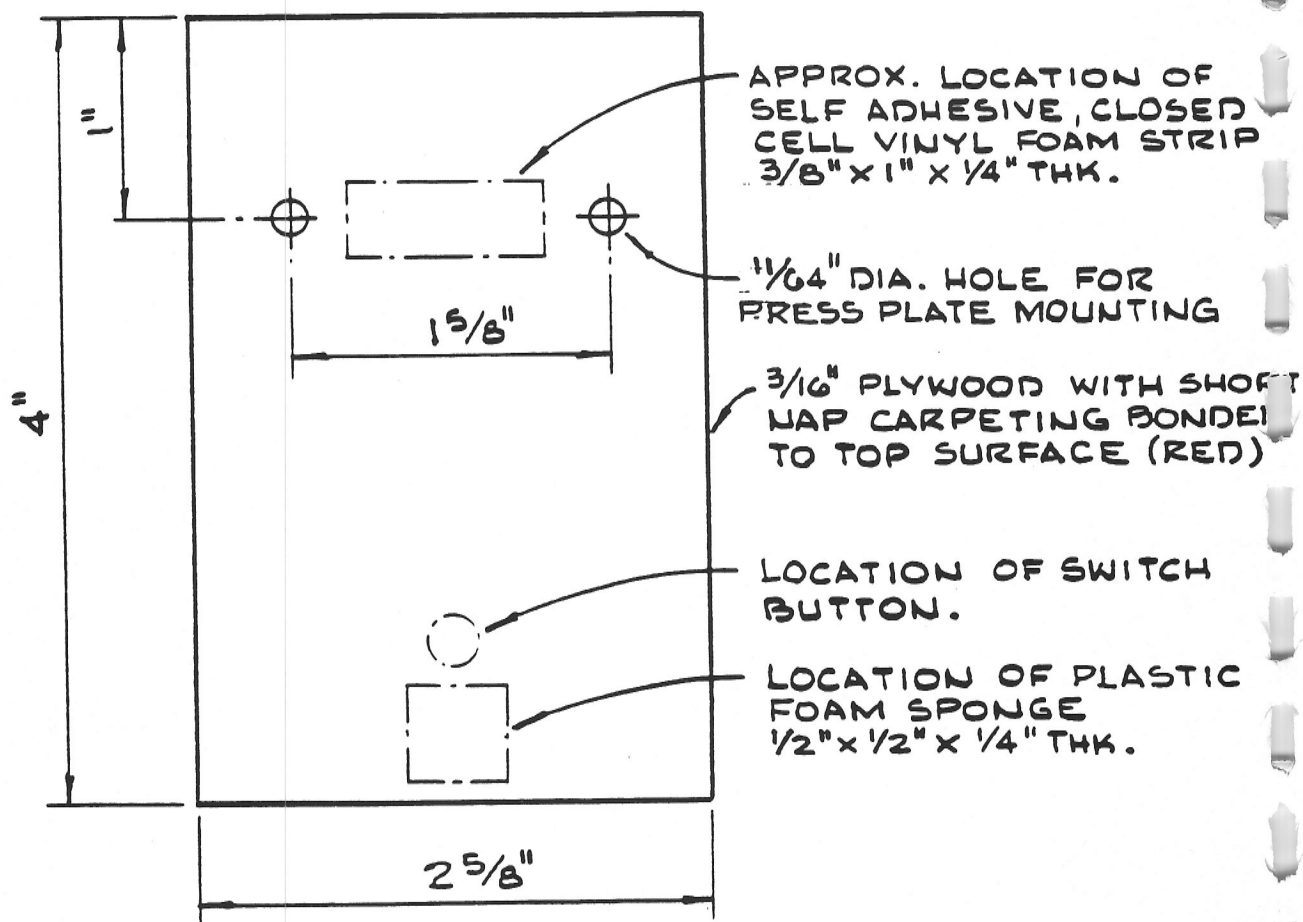
OFFSET WEIGHT

BOND TO SMALL GEAR ON
MOTOR SHAFT WITH EPOXY GLUE



MOTOR MOUNTING DETAIL

BUSY BOX



DETAIL OF CARPET PRESS PLATE No. 4