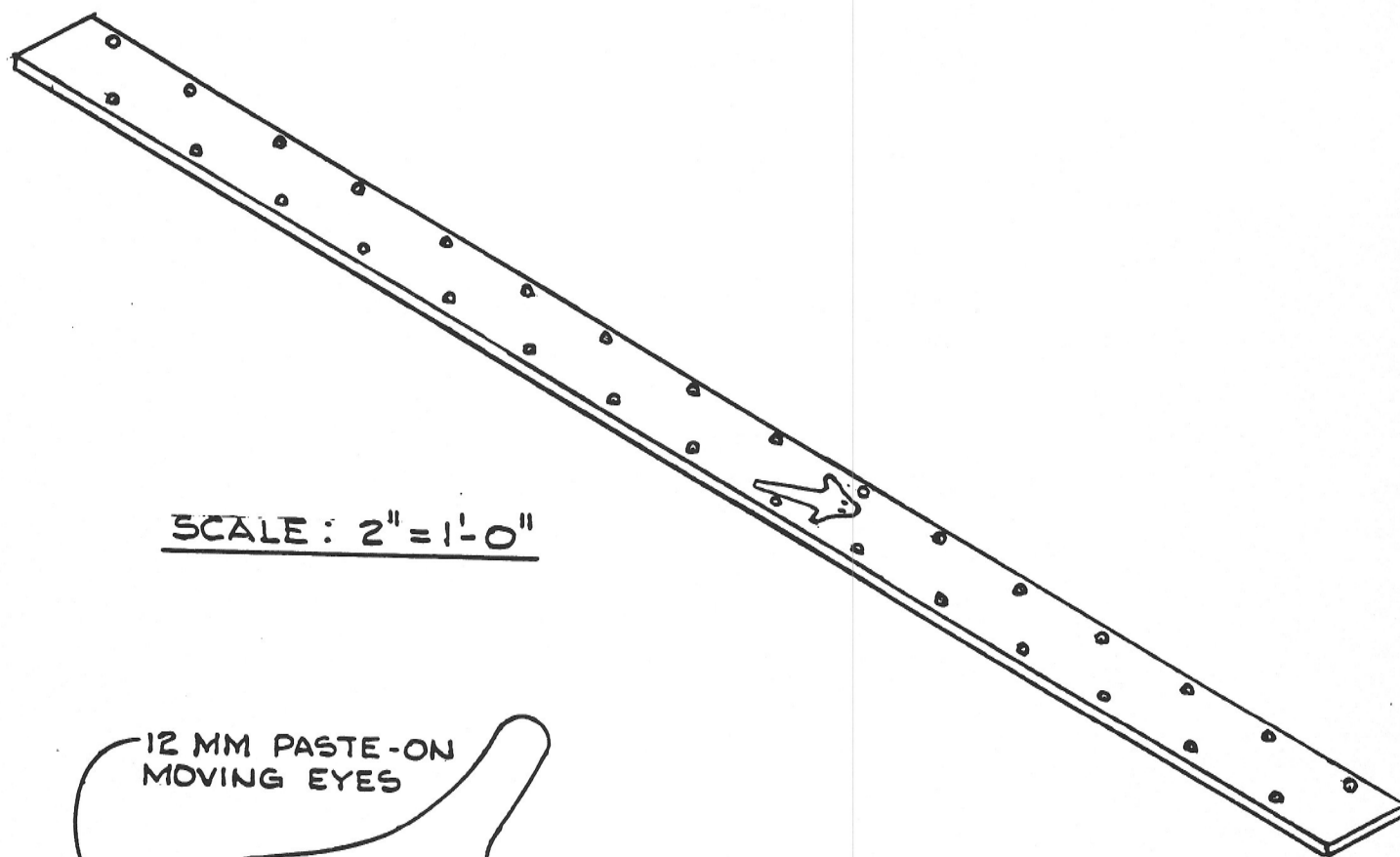
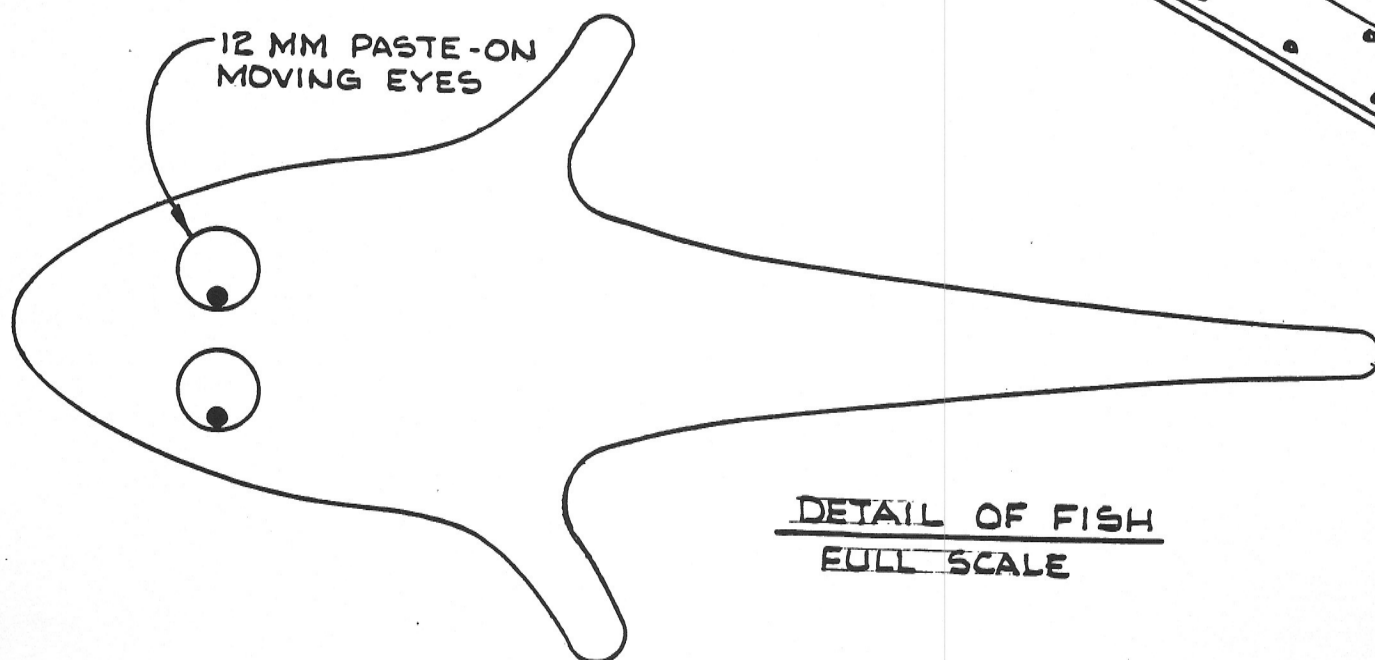


FISH WIGGLER TRACKING TOY

This is a toy that combines attention-keeping with eye-tracking and physical activity. It is made of rather common materials and requires no special tools. It requires no winding up or batteries. The four-foot slide board is placed on a slope and the fish is put on the high end. As the fish slides down, the two rows of pegs cause it to wiggle back and forth. The greater the slide slope, the more vigorous is the wiggle.



SCALE: 2" = 1'-0"



DETAIL OF FISH
FULL SCALE

FISH WIGGLER TRACKING TOY

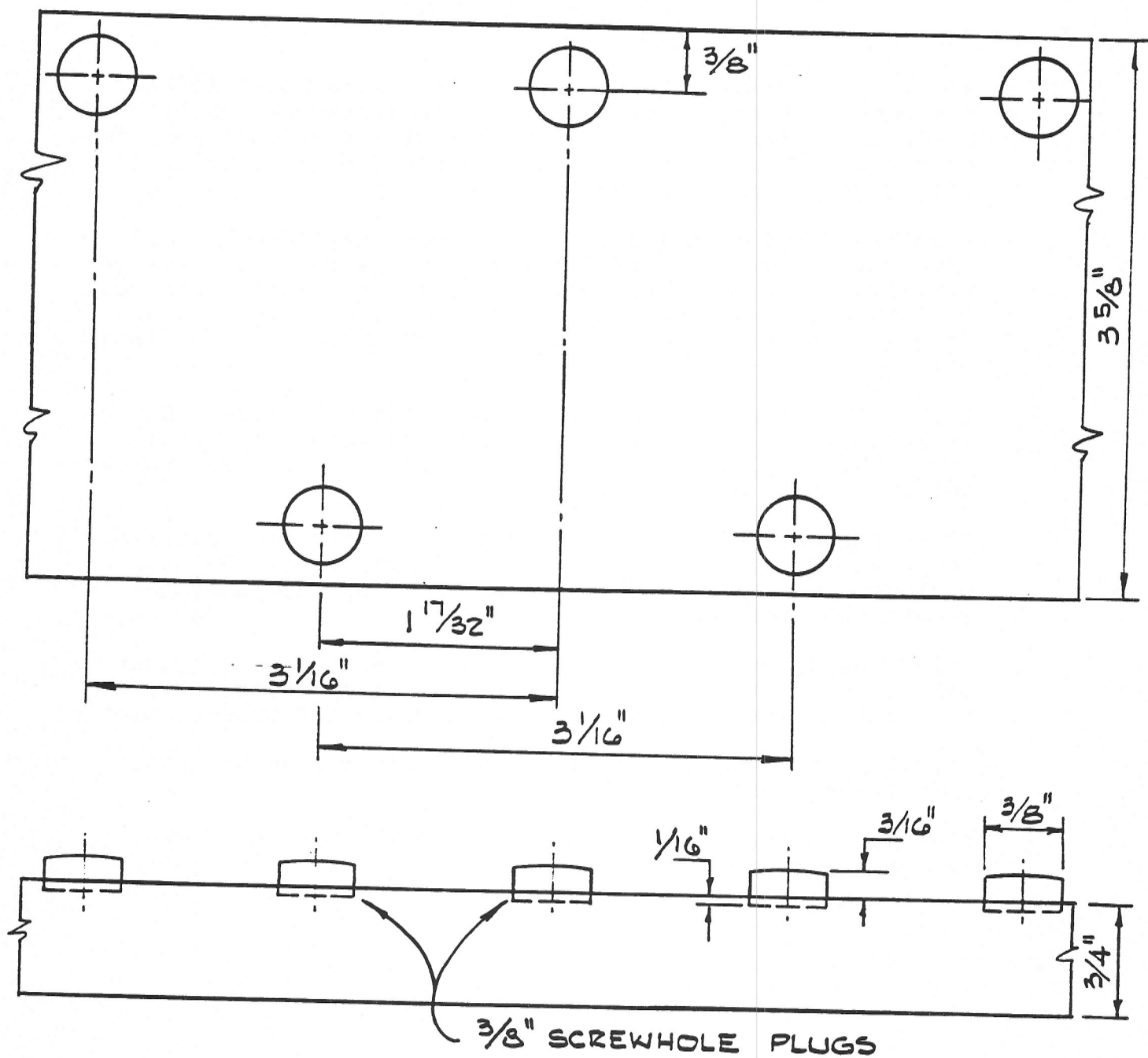
Materials needed for three slides:

- 1" x 10" x 4' clear grade birch or maple
- 12" x 12" x 1/4" tempered Masonite
- 100 screwhole plugs, 3/8" diameter
- Varathane or equivalent enamel in two bright colors
- Package of approximately 20 movable eyes, 12MM in diameter
- Silicone spray
- Elmer's Carpenter Glue

Tools needed:

- Table saw
- Electric drill and set of drill bits
- Sander
- Ruler
- Fine sandpaper
- Powered jigsaw or hand coping saw

FISH WIGGLER TRACKING TOY



DETAIL OF SLIDE BOARD
AND SCREW HOLE PLUGS
FULL SCALE

FISH WIGGLER TRACKING TOY

CONSTRUCTION SUGGESTIONS

The only material requirement for the slide board is that the wood be flat and straight. Cabinet-grade birch or maple is preferred. Any width that will result in a minimum of scrap will do. For instance, a piece of 1" x 10" x 4' will give you three slides.

A well-stocked hardware store or lumber yard should carry screwhole plugs. Use 3/8" diameter plugs and get 31 plugs per slide. If screwhole plugs are not obtainable, they can be made from 3/8" dowel stock, but it takes time to round an end, cut it off to length, round an end, cut it to length, etc.

Locate the holes for the screwhole plugs with care. Using a 3/8" brad-point bit or a regular 3/8" wood bit, drill 1/16" holes. Carefully sand the slide. Then glue a screw-hole plug into each hole.

Trace the outline of the fish onto 1/4" tempered Masonite. Use care to assure that the finished fish is of the same contours as the drawn fish. Sand the fish carefully to smooth the edges and the bottom.

Paint the slide, top and bottom, and the pegs in a bright color. Paint the fish a bright contrasting color. Use two coats of paint, sanding between coats and upon completion.

The 12MM paste-on moving eyes are obtained from an arts and crafts store.

Glue on the eyes. Give the slide and the bottom of the fish a light spray of silicone.