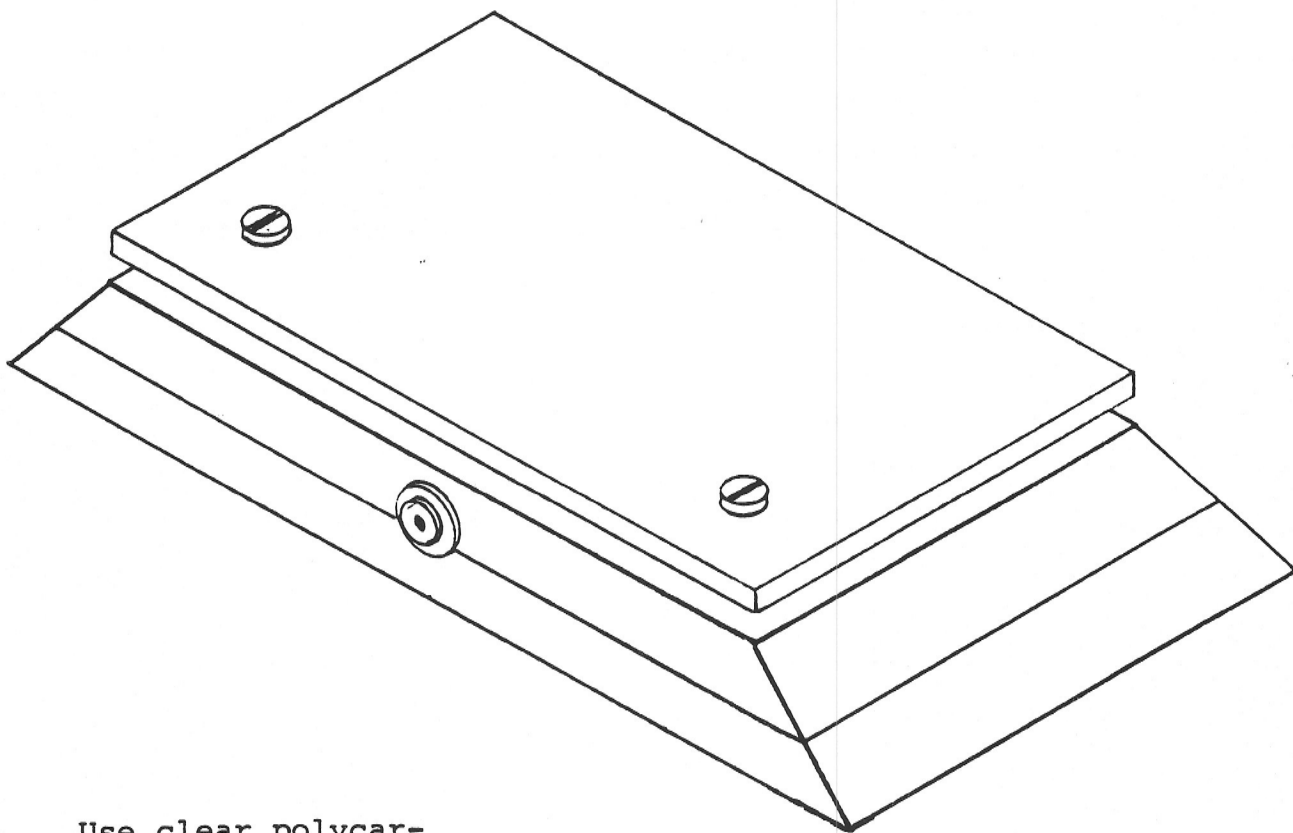


These plate switches are used to operate adapted toys (see Plan #5). They require minimum pressure and accuracy of touch. They are interchangeably used with a variety of adapted toys. The size of the switch is determined by the child's accuracy of reach.

Construction is very simple. A table saw is a requirement. The 1/2" and the 3/8" plywood should have few or no voids between the plies. The operating panel is clear polycarbonate plastic (Lexan or equivalent) that has been spray-painted a bright color on the underside after the holes have been drilled. The plywood is cut to the width and length dimensions. The slot is cut in the top piece, the bottom screws are put in place, and the front and side 45-degree angle cuts are made. Sanding overall should be followed with two coats of Varathane varnish or equivalent. Disassemble and do the wiring. Reassemble and install the operating panel on top and the non-skid material or rubber pads on the bottom.



Use clear polycarbonate plastic that is 1/8" (.125") thick. It is obtainable from companies that sell glass or any plastic supply house. One is U.S. Plastic Co. in Lima, Ohio. You may order by phone: 1-800-537-9724. Ask for stock no. 43020 in whatever quantity you need at \$3.33 (1983) per square foot plus UPS charges.

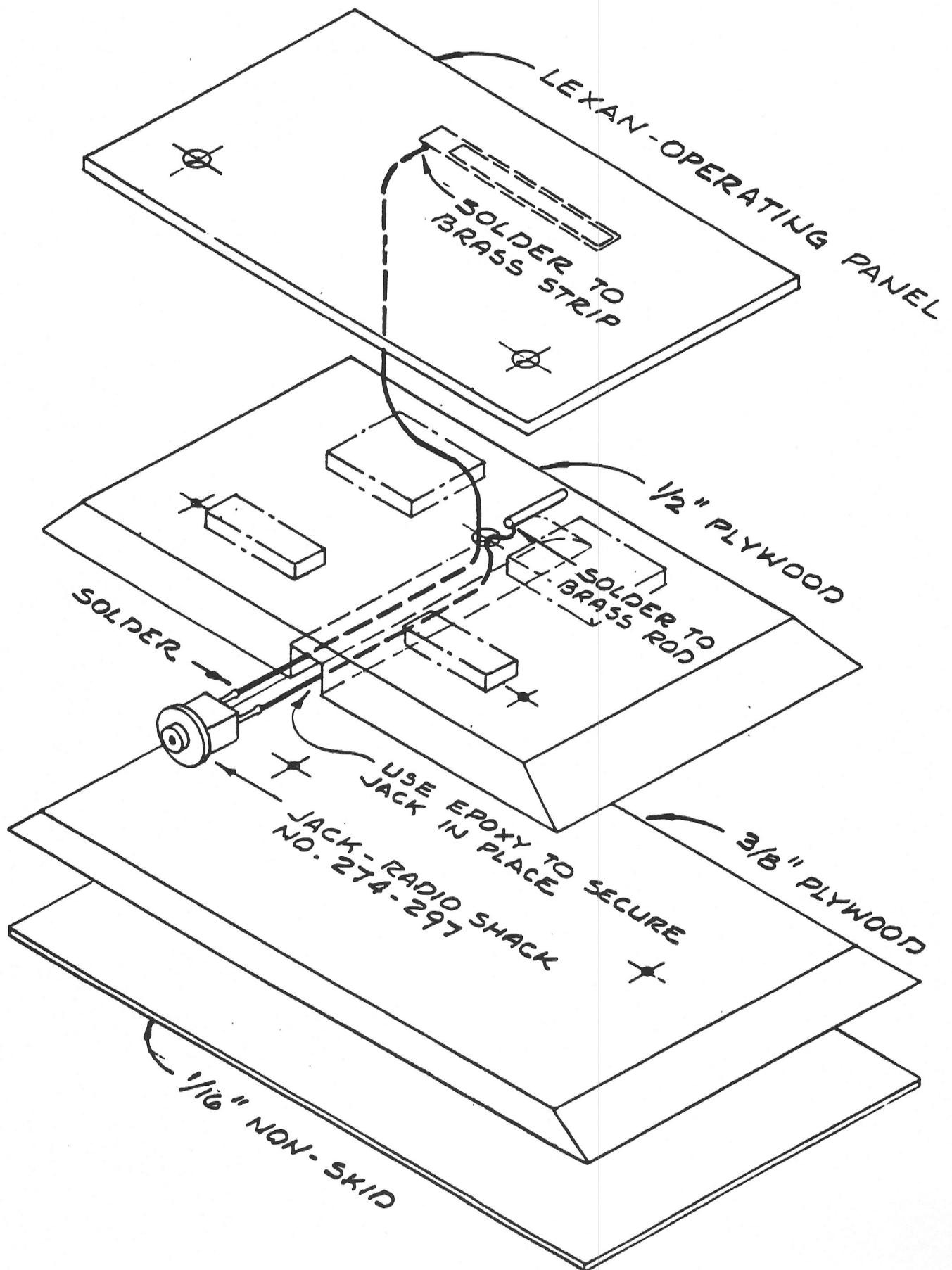
MEDIUM PLATE SWITCH

Materials needed:

- Birch plywood: 8" x 4-3/4" x 1/2"
- Birch plywood: 8" x 4-3/4" x 3/8"
- Clear Lexan: 6½" x 4" x 1/8"
- 2 flat-head Phillips screws: 3/4" x #6
- Brass rod: 1/16" diameter x 1"
- Shim stock: 1-3/4" long x 1/4" wide
- Vinyl foam: 1-1/2" long x 1/4" wide x 1/16" thick
- Vinyl foam: 2" x 2" x 1/4" thick, cut into pieces as shown on drawings
- Jack: Radio Shack #274-297
- Rosin core solder
- #20 gauge wire: Radio Shack #278-1307
- Epoxy glue
- Elmer's Carpenter Glue
- Varathane or equivalent gloss varnish
- Varathane or equivalent enamel in bright colors
- Non-skid material or felt: 8" x 4-3/4"; this provides a protective bottom surface

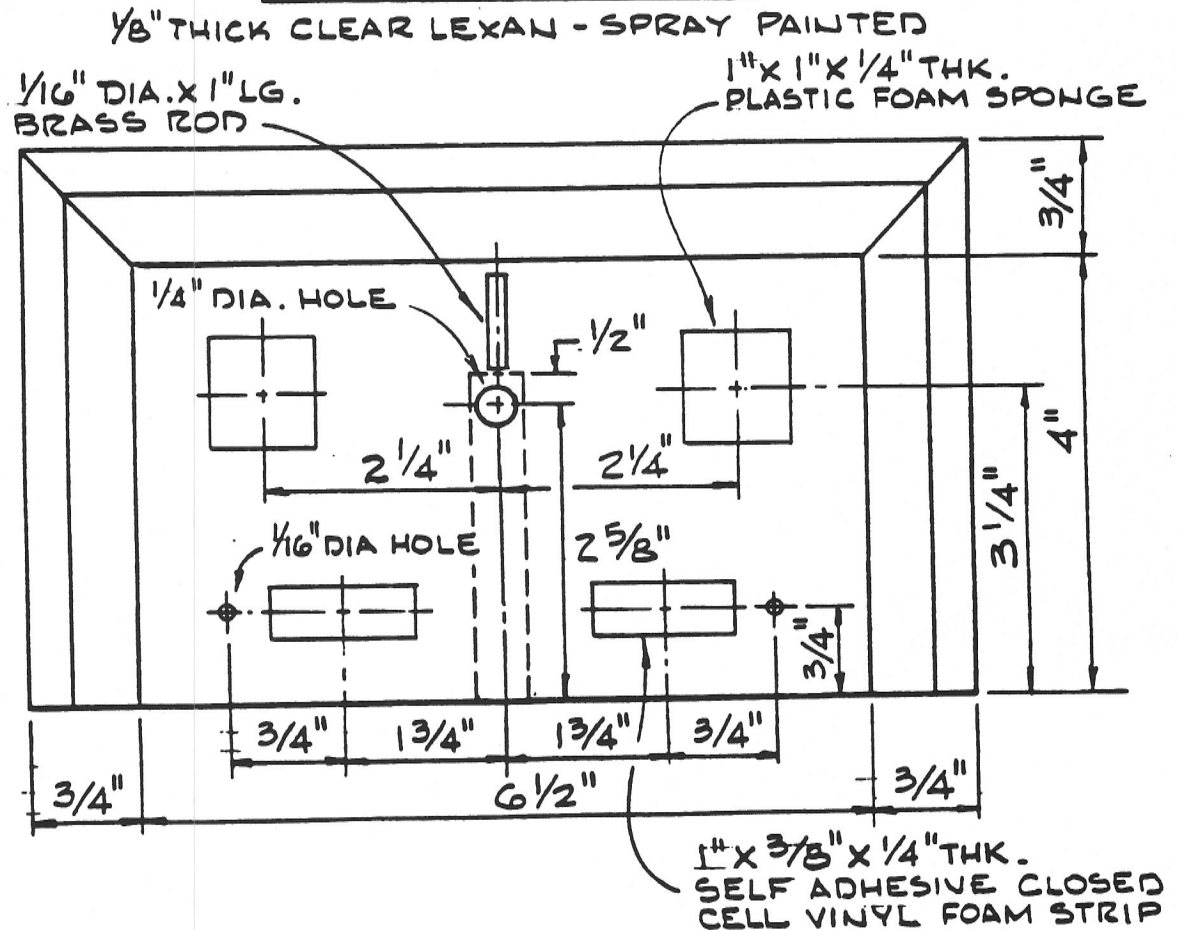
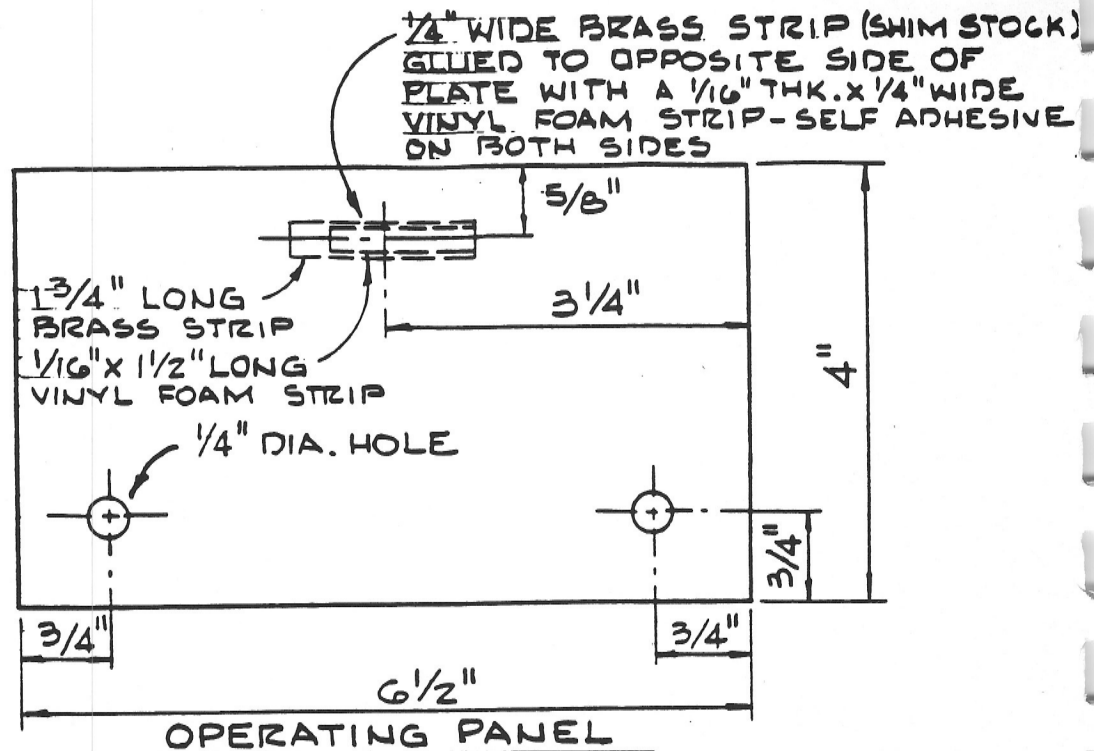
Tools needed:

- Table saw
- Sander
- Electric drill and set of drill bits
- Ruler
- Square
- Screwdriver
- Brush



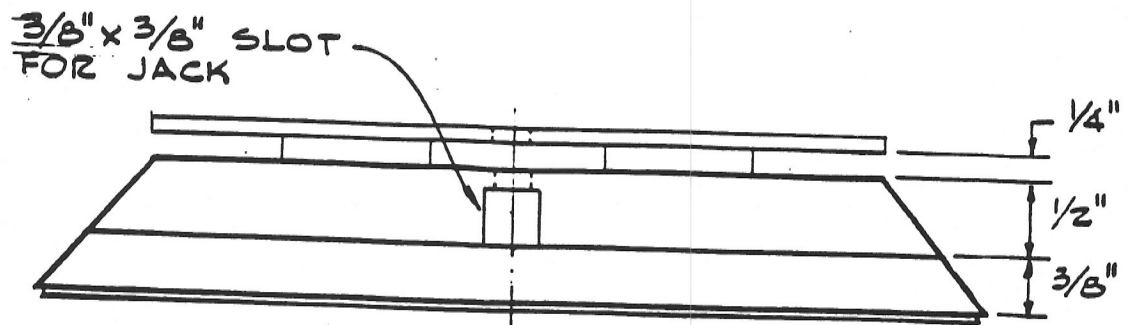
WIRING SCHEME

MEDIUM PLATE SWITCH

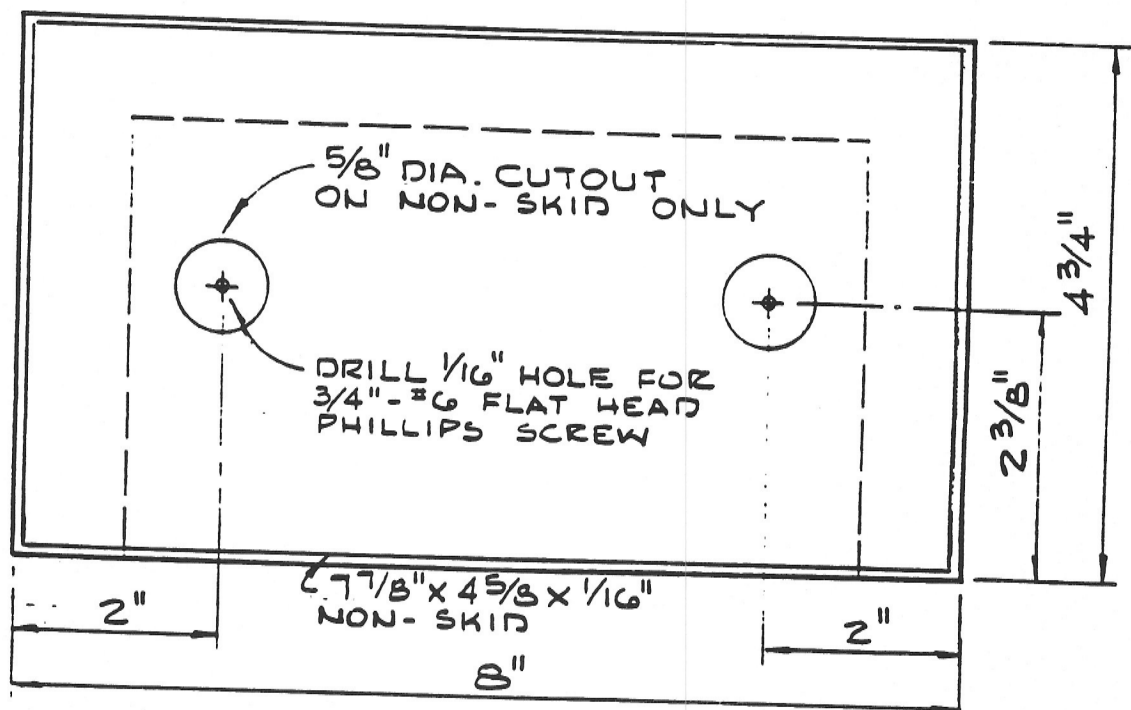


TOP VIEW OF SWITCH BOX
SHOWN WITHOUT LEXAN PANEL

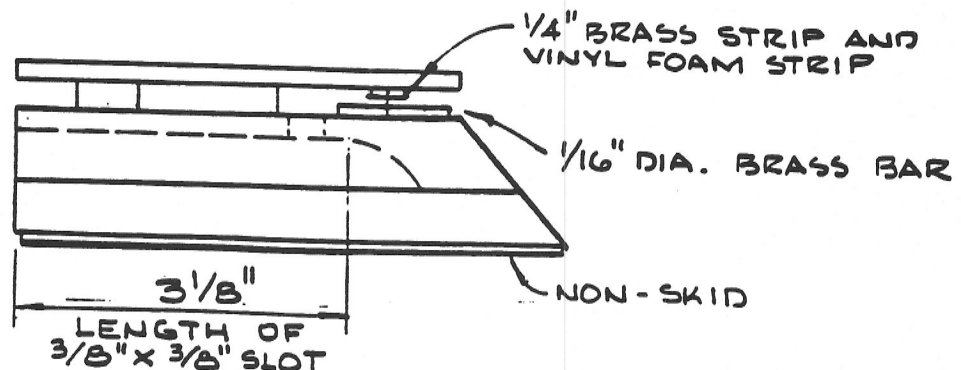
MEDIUM PLATE SWITCH



END VIEW OF SWITCH BOX



BOTTOM VIEW OF SWITCH BOX



SIDE VIEW
OF SWITCH BOX