

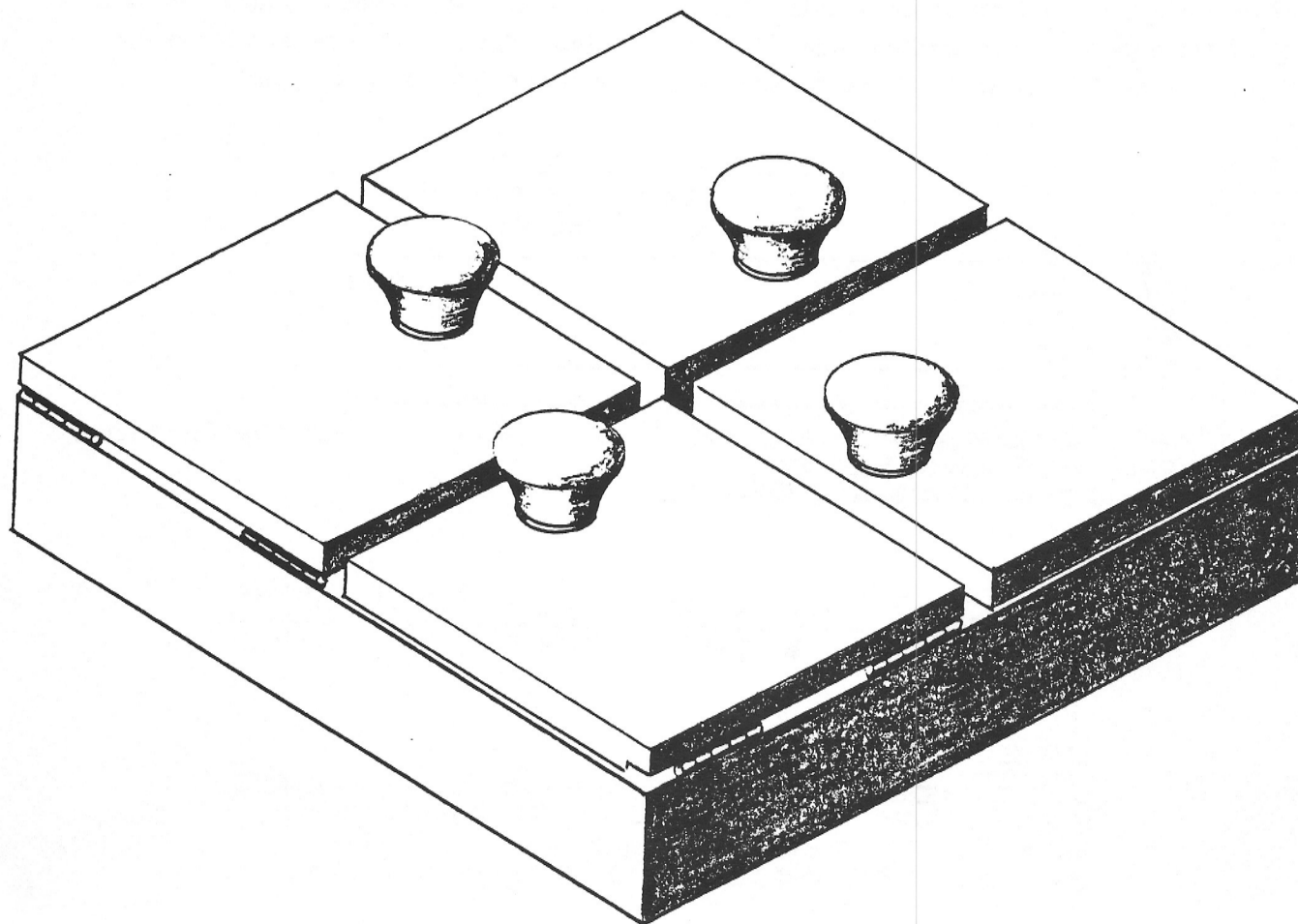
This creative toy caters to a child's natural curiosity and provides an opportunity to explore. It is also an ideal toy for the child who is developing the concept of object permanence. The doors on this box are easily opened. Behind each door is an object which has tactile, visual or auditory appeal. The light-activated musical movement provides the child with a simple cause and effect example. The musical element has a life expectancy of over a year and is replaceable at low cost.

With an older child, try this game: turn the box around and around to challenge the child. Then let him or her try to guess which door hides the music box in a kind of shell game with doors.

The baby door box is really simple to make. Care must be taken to get the dimensions right. If one color is used for the inside and a complementary color for the outside, a little masking prior to painting will be helpful.

MATERIALS NEEDED

- All of the wooden pieces can be cut from three pieces of 8" x 8" x 3/4" birch plywood
- Four 1 1/4" diameter wooden cupboard knobs and screws
- A piece of 1/4" plexiglas mirror 3 7/16" x 3 7/16" obtainable from any plastics company
- A 2" diameter pompom obtained from a crafts store



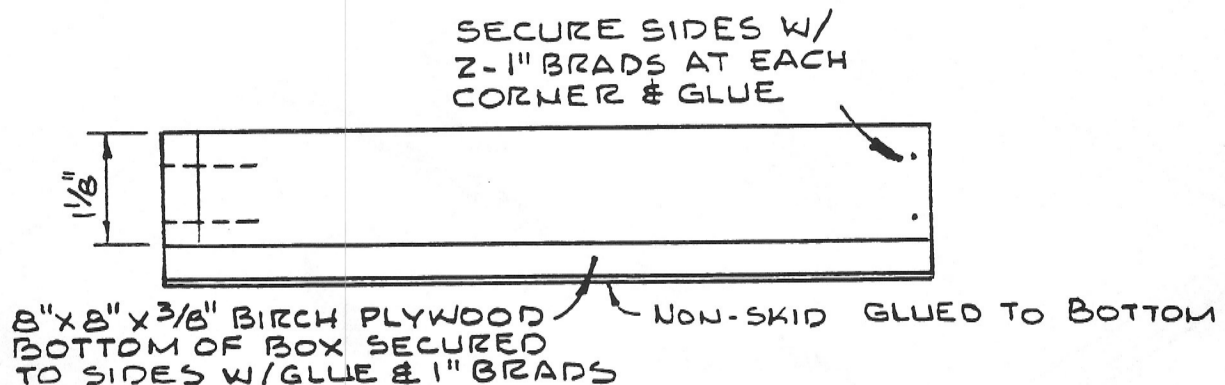
- A solid plastic animal that can fit into the box under one door, obtainable from a craft or toy store, usually many in one bag
- A "Touch-Me Melody Movement" for the bottom of one of the boxes under a door. These are obtainable for a small amount from KLOCKIT (See Some Sources of Specialty Items at bottom of Table of Contents).
- Masking tape
- Two colors of Varathane, or equal, spray paint
- Four pairs of hinges 1" long x 3/8" with screws
- 1" brads
- Elmer's Carpenter's Glue
- Non-skid material 8" x 8" for bottom
- Contact cement to adhere the non-skid material

TOOLS NEEDED

- Table saw
- Power drill and a set of drill bits
- Ruler, screwdriver, etc.

CONSTRUCTION SUGGESTIONS

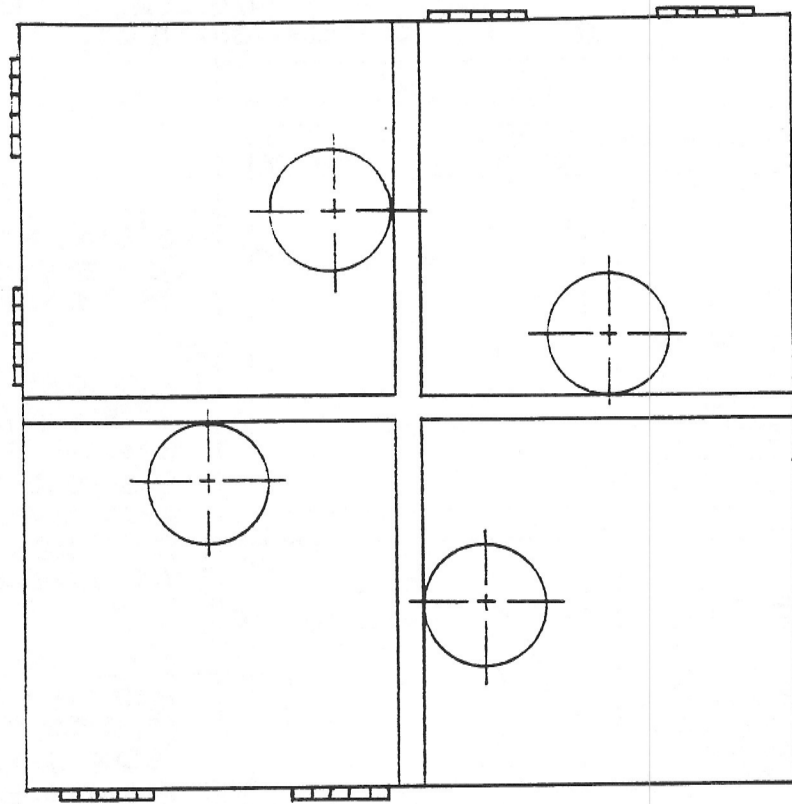
Cut out all of the pieces and sand them. Make the cut outs for the hinges on each door. Drill the holes in the doors for the knobs. Assemble all pieces except the doors and the knobs. Mask the insides and spray the outsides. Spray the doors the same as the outside of the box. Mask the outside and spray the insides of the boxes. Spray the knobs the same color as the insides. Install the various objects into the boxes. Install the doors and the knobs.



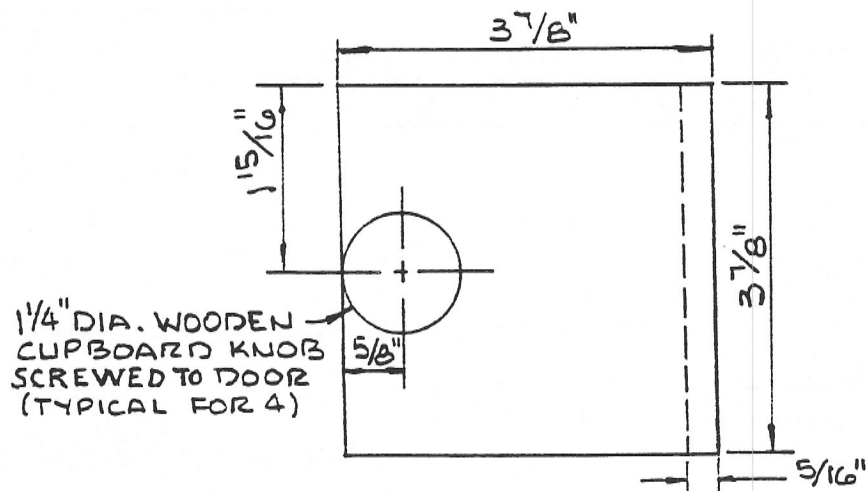
FRONT VIEW OF BABY DOOR BOX
SHOWN WITHOUT DOORS

NOTE:

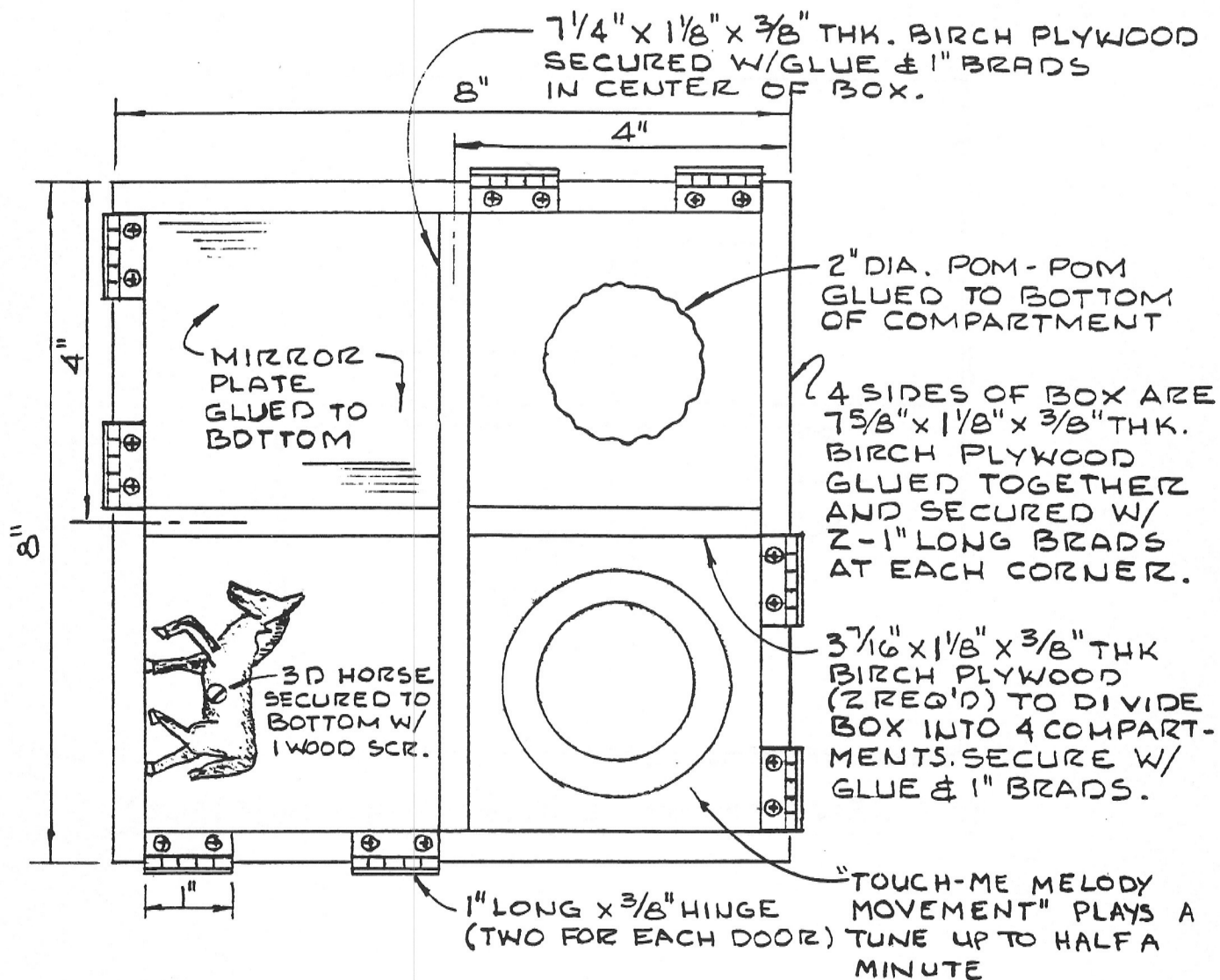
ALL DIMENSIONS ARE BASED ON PLYWOOD BEING 3/8". IF ACTUAL THICKNESS IS DIFFERENT, THE DIMENSIONS SHOWN SHOULD BE ADJUSTED ACCORDINGLY.



TOP VIEW OF BABY DOOR BOX (SHOWN W/DOORS)



TOP VIEW OF DOOR (4 REQ'D)



TOP VIEW OF BABY DOOR BOX
SHOWN WITHOUT DOORS

