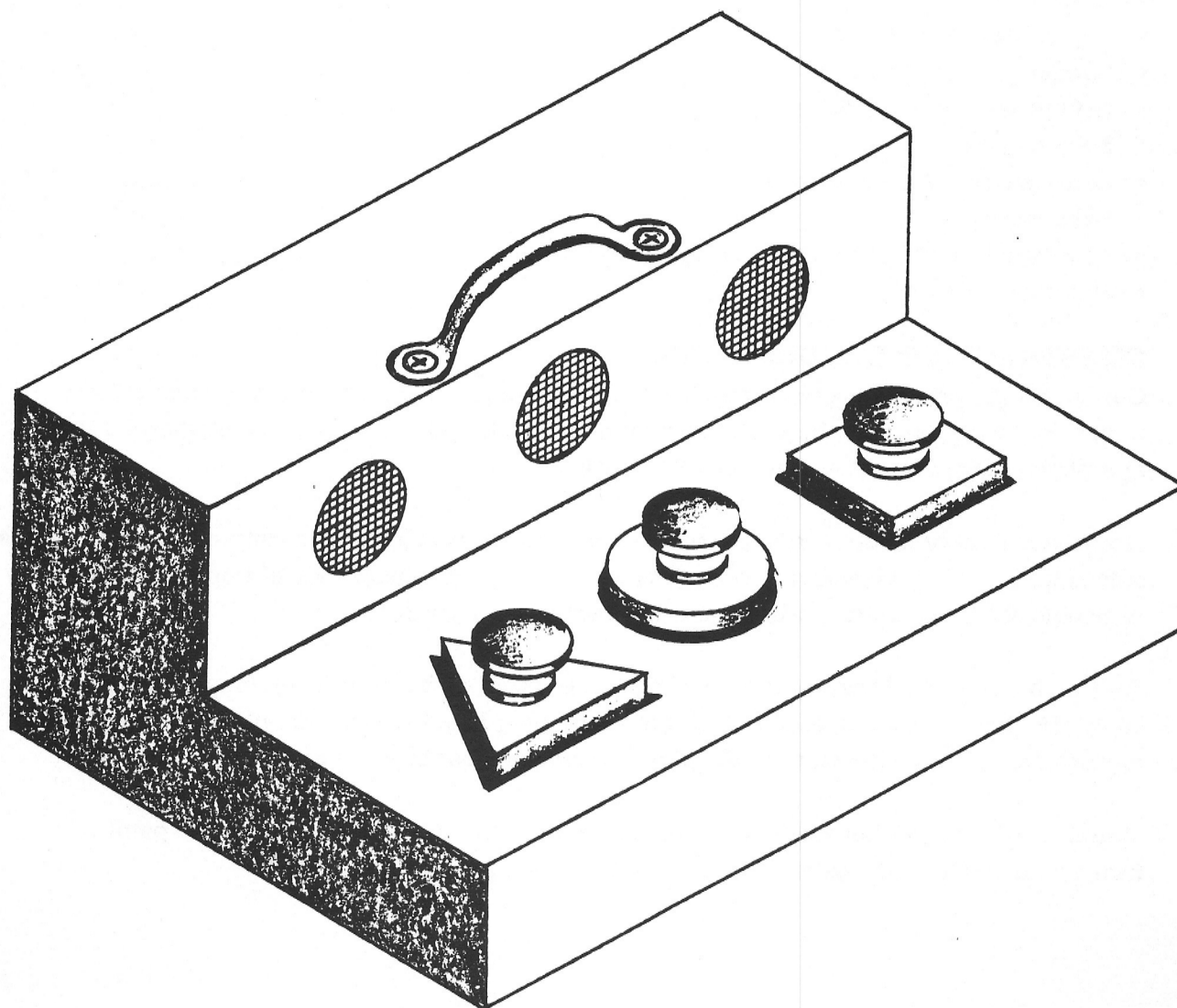


Making this toy requires quite a lot of patience, knowledge about soldering wires, and the ability to follow detailed drawings. But, in all, it is not a difficult toy to make.

**MATERIALS NEEDED**

- One piece of 5/8" birch plywood 12" x 5" for top panel
- One piece of 3/8" birch plywood 12" x 24" for remaining parts
- One Stanley #CD-479 door pull (handle)
- Three 1 1/4" diameter wood knobs
- One piece 3/4" plywood 3" x 10" for plugs
- Twelve 1" x #4 Phillips head wood screws
- Thirteen 1" x #17 brads
- Sixteen 1/4" carpet tacks
- Four rubber bumpers (feet)
- One 1 1/2" x 7/8" butt hinge
- One piece 1" x 3/4" x 1/32" approx. sheet metal for door plate



- Nine 3/8" x #4 sheet metal screws for door plate, hinge and switch
- One "on-off" switch, Radio Shack #275-401
- Two "C" size battery holders, Radio Shack #270-402
- Two "C" size batteries
- Three Sankyo Electronic Music Movements, #30063, #30064 and #30078 from Klockit (See Some Sources of Specialty Items at bottom of Table of Contents.)
- 22 gauge wire
- 2 1/2" x 9" piece of #16 wire screen (as on house windows)
- Acid-core solder
- Four colors of Varathane, or equal, enamel
- Elmer's Carpenter's Glue
- Piece of thin cloth used behind the #16 screen on the front panel. Cloth is also used on switch plate mounting board and should be painted to correspond with the colors of the round, square, and triangular plugs

### **TOOLS NEEDED**

- Table saw
- Adjustable circle cutter
- Sander or sanding block with sandpaper
- Drill press and set of drills
- Soldering iron
- Screwdrivers: Phillips and straight
- Saber saw
- Paintbrushes and three colors of Varathane enamel
- Hammer, ruler, etc.

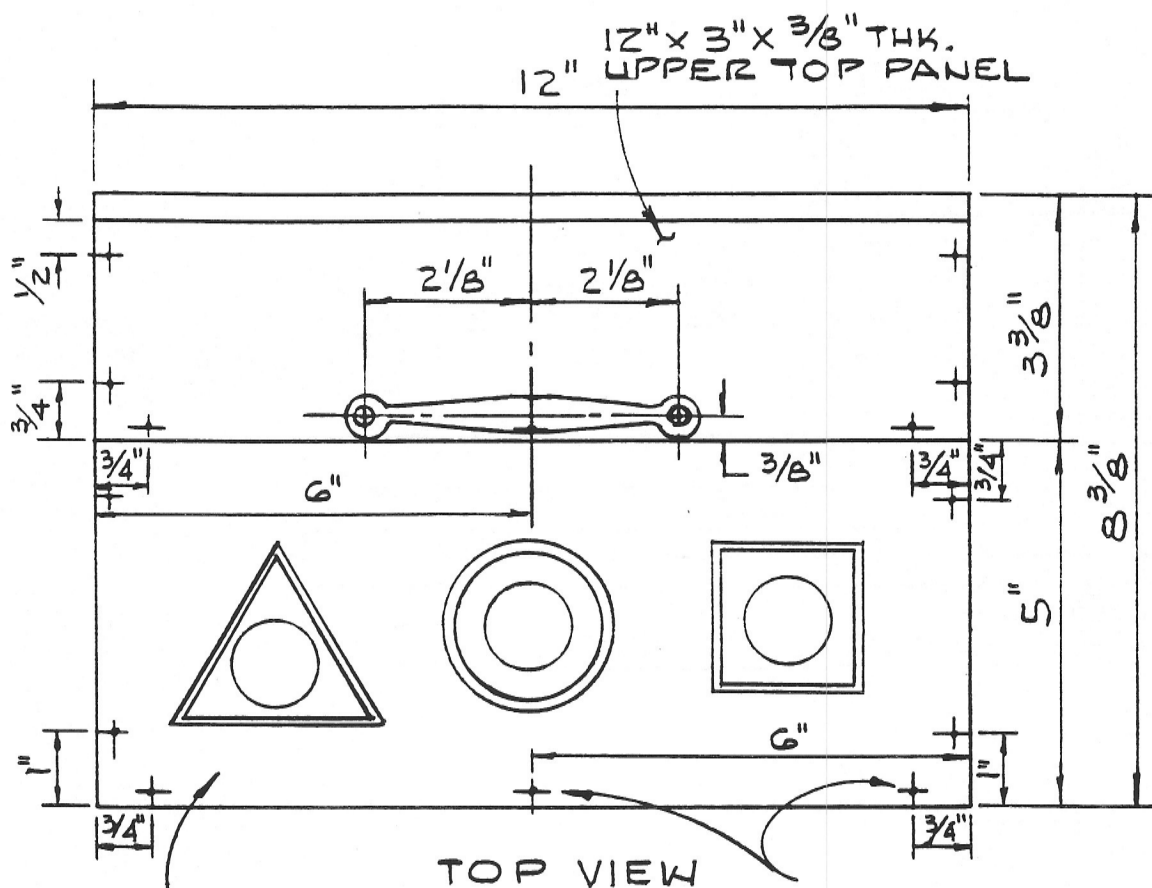
### **CONSTRUCTION SUGGESTIONS**

Cut out all the plywood pieces according to the drawings. Make cut-outs for plugs on top panel. Make cut-outs on the back panel for door. Make door to fit door opening and fit hinges and plate. Make cut-out on back panel for switch.

Mount two battery holders on back side of door. Secure screening and cloth over holes on back side of front panel. Assemble music movement and wiring to back side of front panel. Assemble all sides, top and bottom and sand smooth on sander.

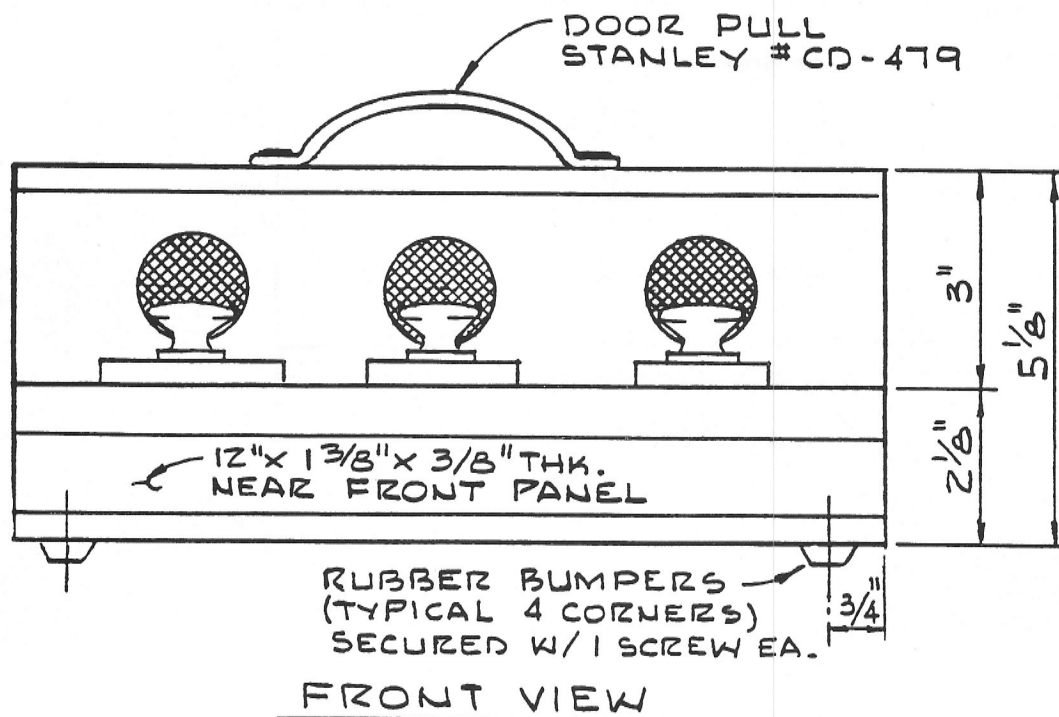
Remove bottom panel and complete wiring. Glue wood knobs in place on plugs. Paint completed box. Paint a border 1/4" around each plug hole to match the plug. Continue the painted border down the sides of the plug hole and across the cloth bottom.


Mount the handle on top as shown in the drawing. Glue colored sheet plastic or paint a triangle above the rear switch as shown in the drawing.



12"X5"X3/4" THK.  
TOP PANEL  
SEE DETAIL NO.1  
FOR CUTOUTS

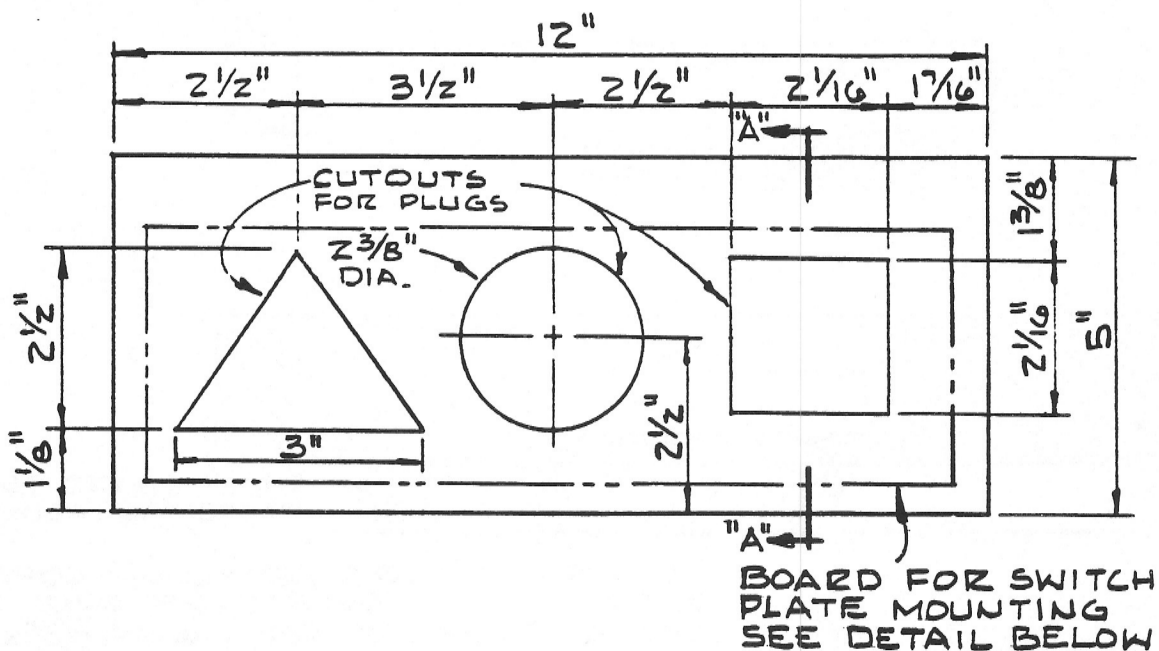
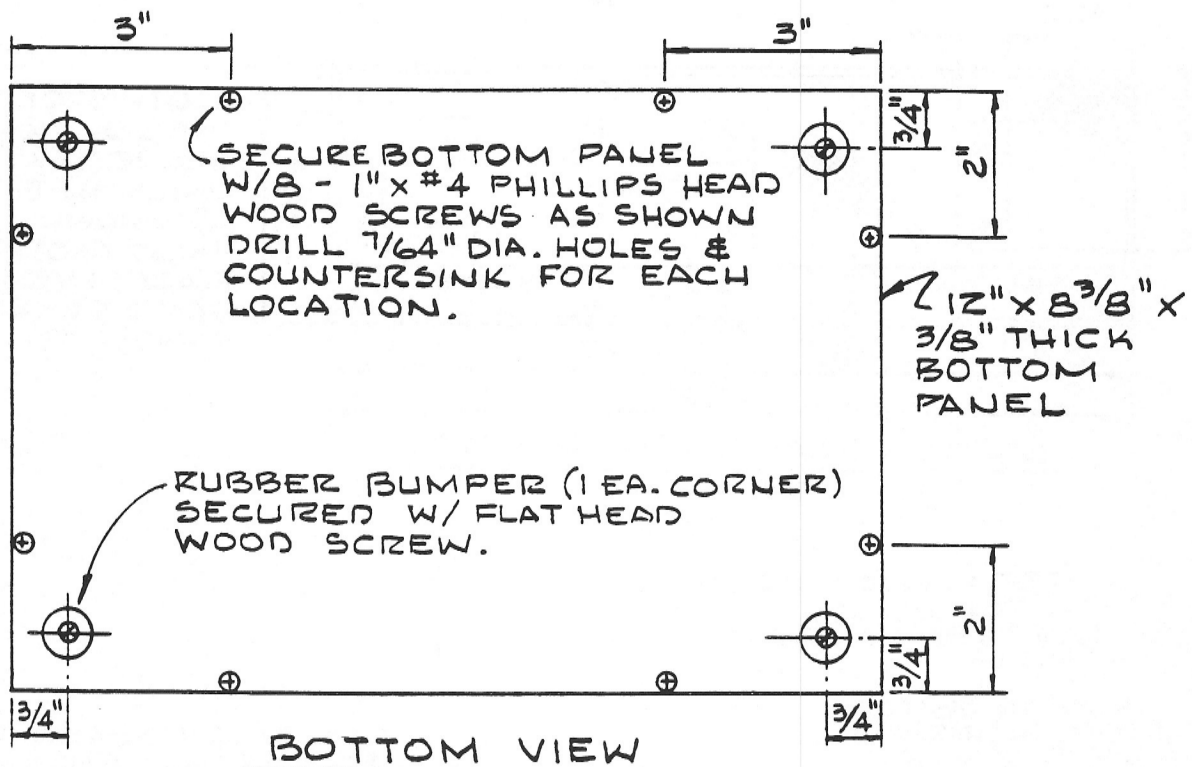
MUSIC BOX ASSEMBLED W/GLUE  
AND 1"-#17 BRADS AS SHOWN  
(14 BRADS SHOWN - THIS VIEW)

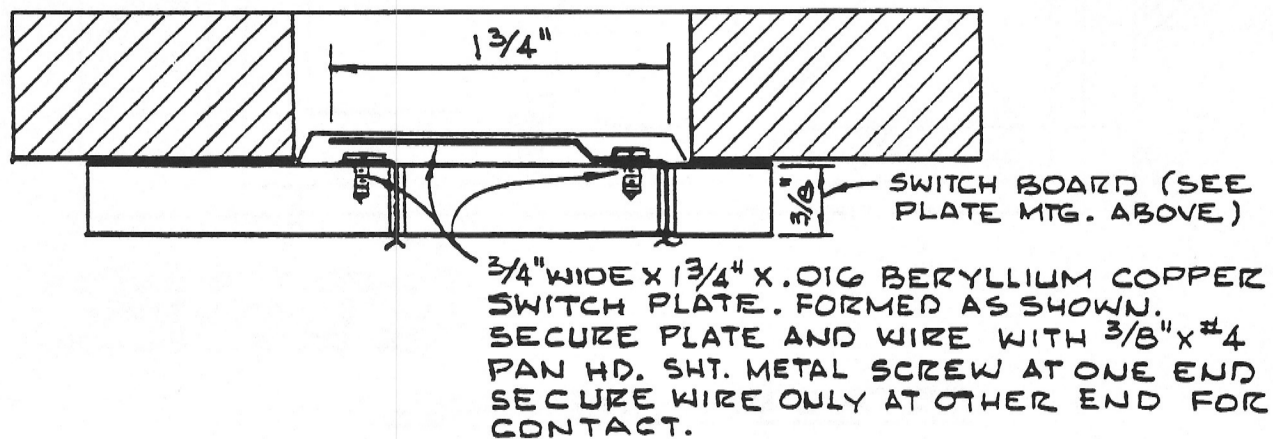
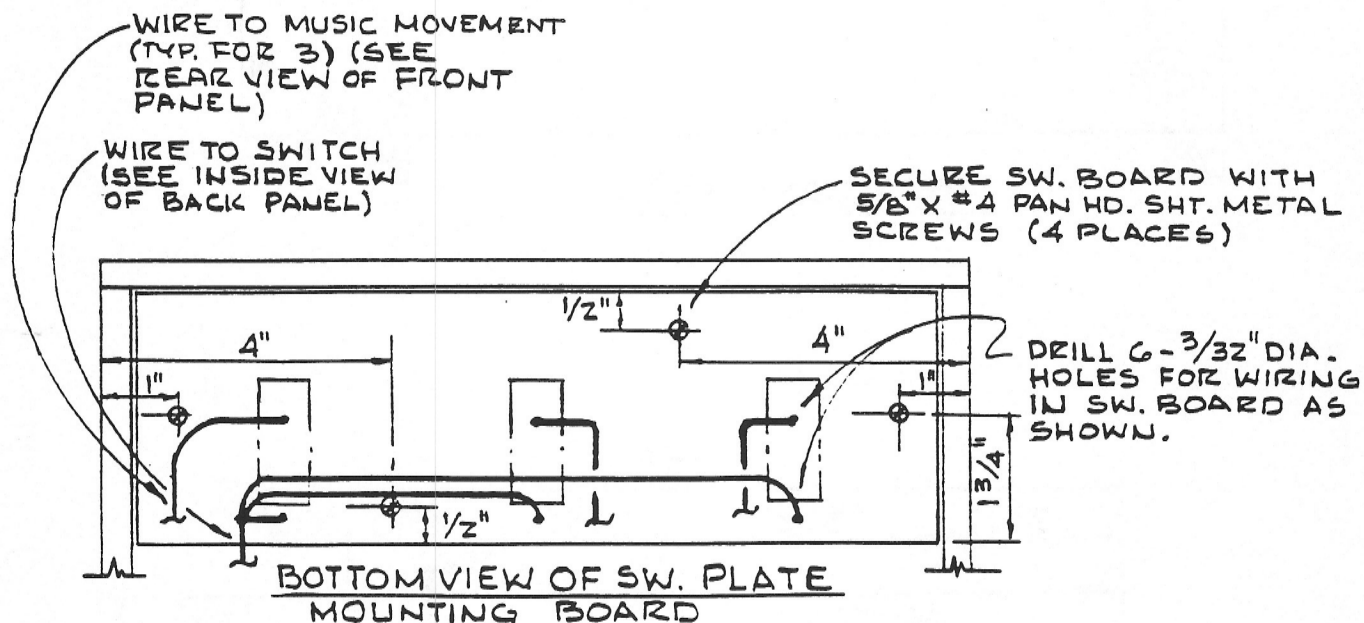
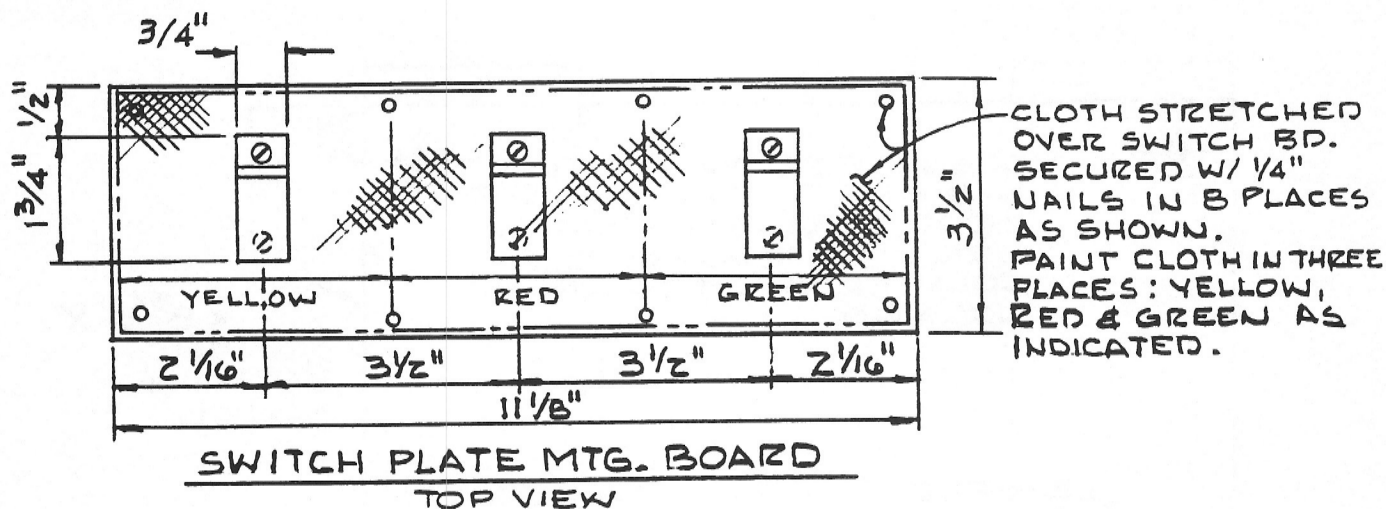




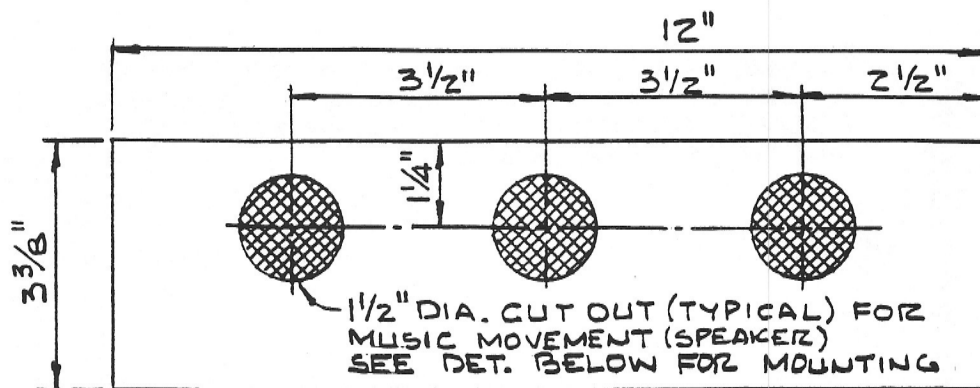
REAR VIEW



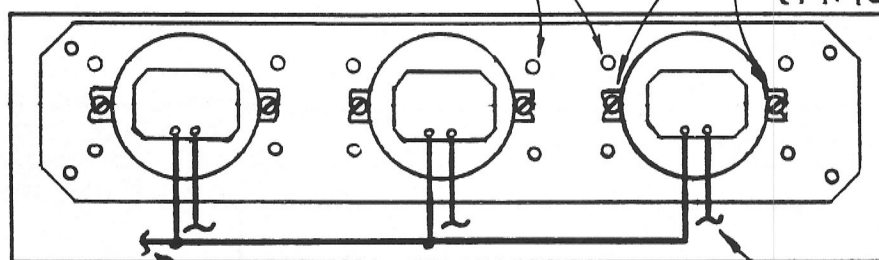




SECTION "A-A"

DETAIL NO. 2 - FRONT PANEL

SECURE #16 MESH SCREEN  
AND CLOTH W/16-1/4" LARGE HD.  
NAILS AS SHOWN. (SEE TYPICAL  
CROSS SECTION BELOW)

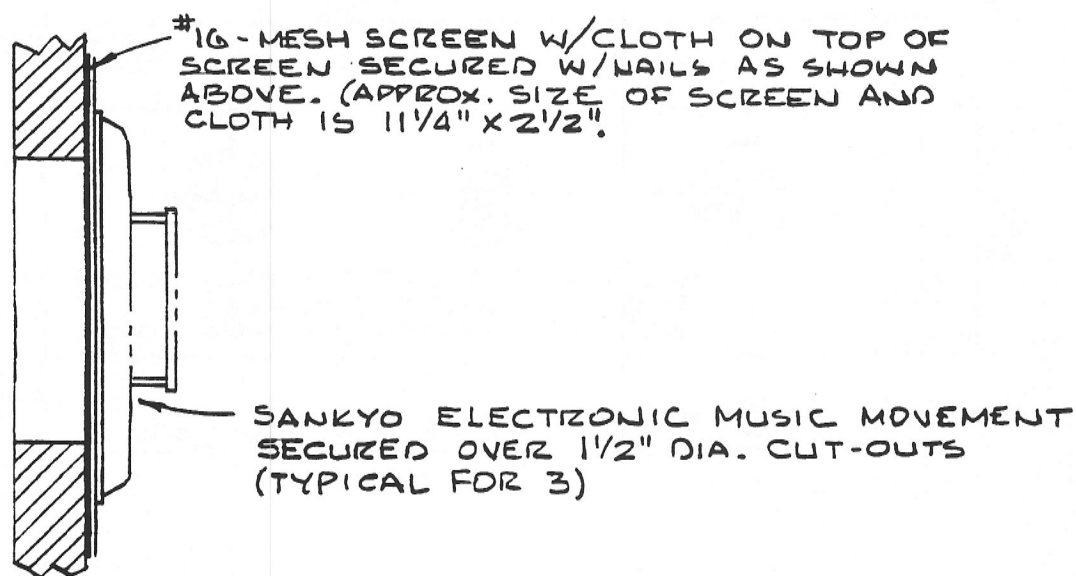


SECURE  
MUSIC MOVEMENT W/ 2  
#4 x 3/8 S.M. SCREWS  
(TYPICAL FOR 3)

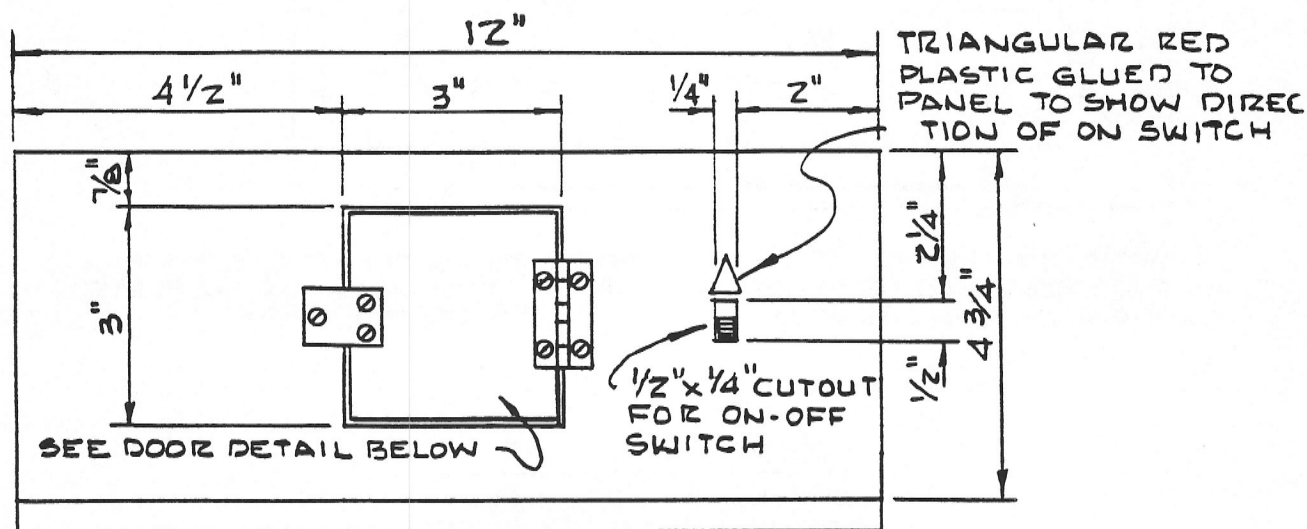
WIRE TO (-) SIDE OF  
BATTERIES (SEE INSIDE  
VIEW OF BACK PANEL)

WIRE TO SWITCH PLATE (TYP)  
SEE BOTTOM VIEW OF SW. PLATE  
AND WIRING DIAGRAM

REAR VIEW OF  
FRONT PANEL



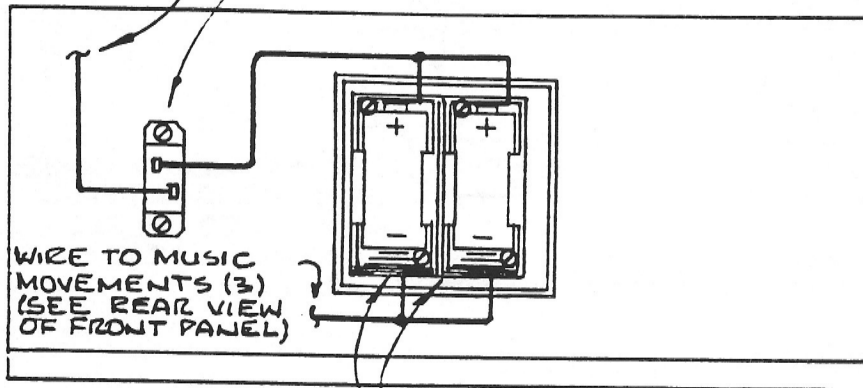
CROSS SECTION OF  
MUSIC MOVEMENT MOUNTING



DETAIL No. 3 - BACK PANEL

WIRE TO MUSIC  
SWITCHES (SEE  
BOTTOM VIEW OF  
SW. PLATE)

ON-OFF SWITCH RADIO SHACK #ZTS-401 SECURED  
W/ 2-3/8" SHT. METAL SCREWS TO INSIDE OF BACK  
PANEL OVER CUTOUT

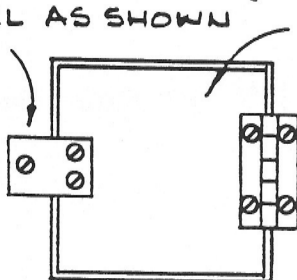


WIRE TO MUSIC  
MOVEMENTS (3)  
(SEE REAR VIEW  
OF FRONT PANEL)

2 BATTERY HOLDERS RADIO SHACK #Z10-40Z  
EACH SECURED WITH 2-3/8" SHEET METAL  
SCREWS TO BACK SIDE OF DOOR

INSIDE VIEW OF BACK PANEL  
SHOWING SWITCH, BATTERIES AND WIRING

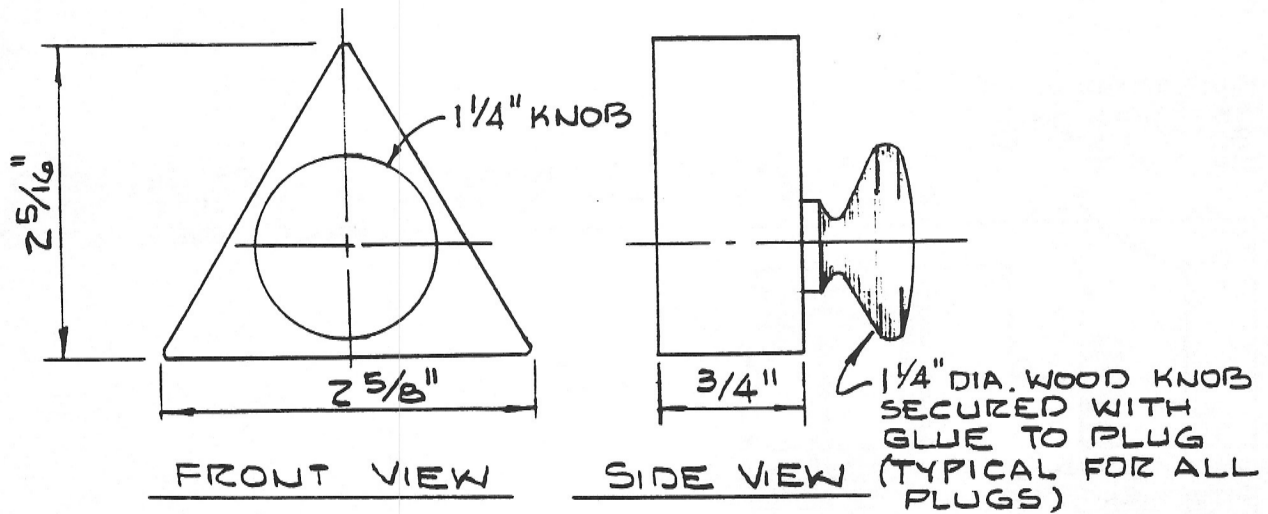
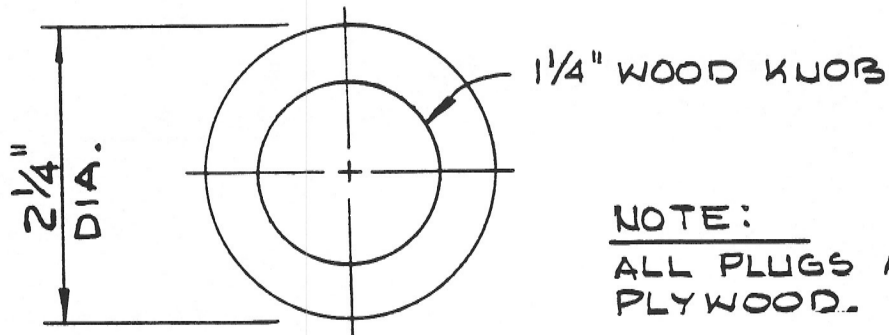
1" x 3/4" METAL PLATE  
SECURED WITH THREE  
3/8"-#4 S.M. SCREWS  
TO DOOR AND BACK  
PANEL AS SHOWN



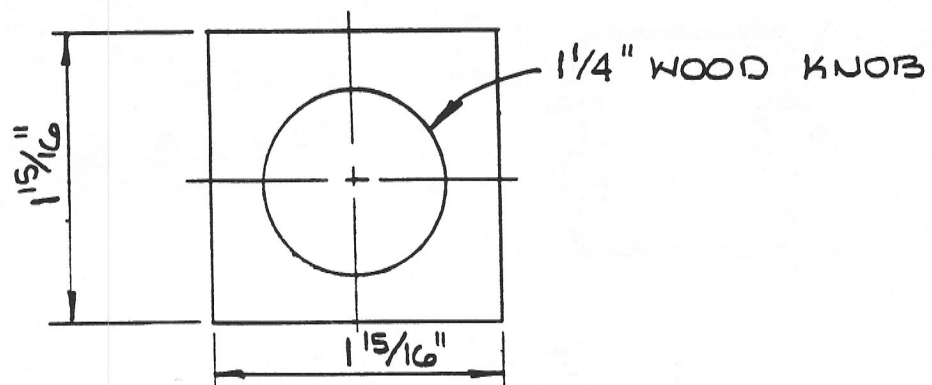
2 7/8" x 2 7/8" x 3/8" THK DOOR PANEL  
W/ 2 BATTERY HOLDERS ATTACHED  
TO INSIDE (SEE INSIDE VIEW OF  
BACK PANEL ABOVE)

1 1/2" x 7/8" HINGE SECURED TO  
DOOR AND BACK PANEL WITH  
3/8"-#4 S.M. SCREWS

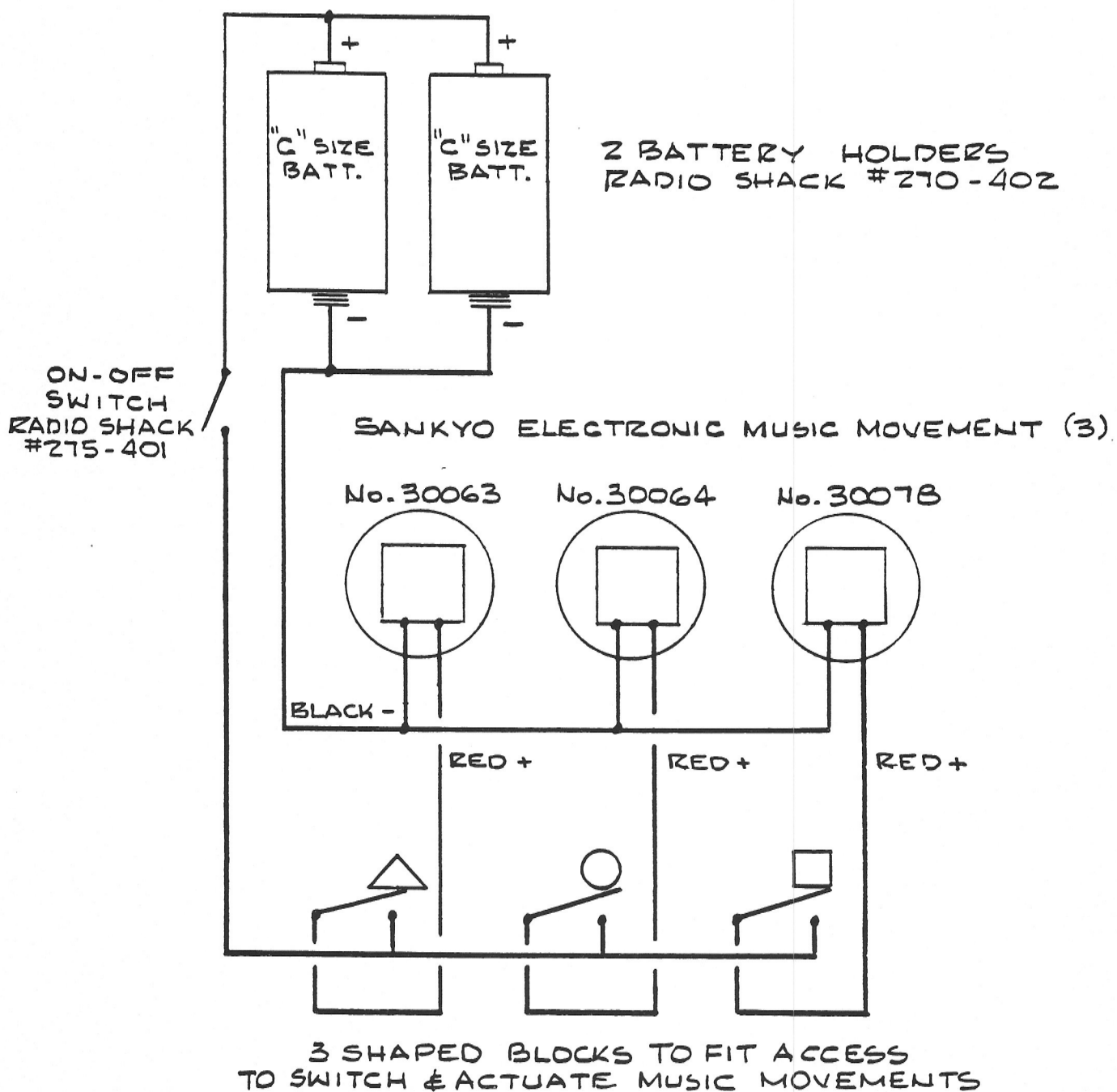
DOOR DETAIL

TRIANGULAR PLUGNOTE:

ALL PLUGS ARE  $\frac{3}{4}$ " THK.  
PLYWOOD.

ROUND PLUGSQUARE PLUG



WIRING DIAGRAM