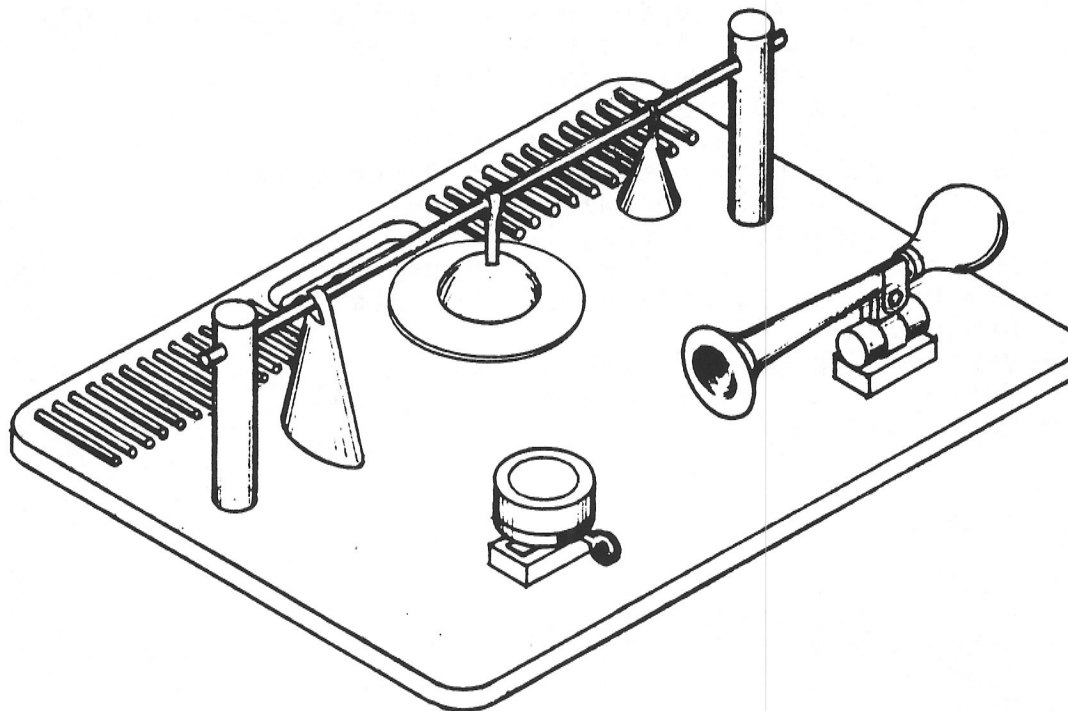


NOISE BOARD

This board is full of assorted noisemakers that let a child discover the sounds that several different devices make when hit, or squeezed, or pushed, or rubbed.



Materials needed:

- One piece of 3/8" thick x 20" x 14" birch plywood
- Two pieces 5 1/4" long 1" diameter dowel
- One piece 18" long 1/2" diameter dowel
- 19 pieces 2 1/2" long 3/16" diameter dowel and flattened on one side
- 12 pieces of 2 1/2" long 5/16" diameter dowel and flattened on one side
- Two pieces 1/2" x 2" x 1" birch plywood
- Four 3/4" x #6 tapping screws with countersunk heads
- Two 1 1/4" x #10 sheet metal screws
- Two 3/4" x #6 sheet metal screws
- Five 3/8" x #4 sheet metal screws
- Elmer's Carpenter's Glue or equal
- One bicycle horn, Schwinn #05005 or equal
- One bicycle bell, Schwinn or equal
- One 5" diameter cymbal, from toy store
- One cow bell, from Pier 1 Imports (see page 6) or equal
- One brass bell, from Pier 1 Imports
- Sandpaper
- Varathane gloss varnish or equal
- One piece 20" x 14" non-skid material
- Contact cement

Tools needed:

- Table saw
- Set of drill bits and drill
- Saber saw with fine tooth blade
- Sanding block
- Brush
- Screwdriver
- A mechanical sander would help to flatten the dowels

Construction suggestions:

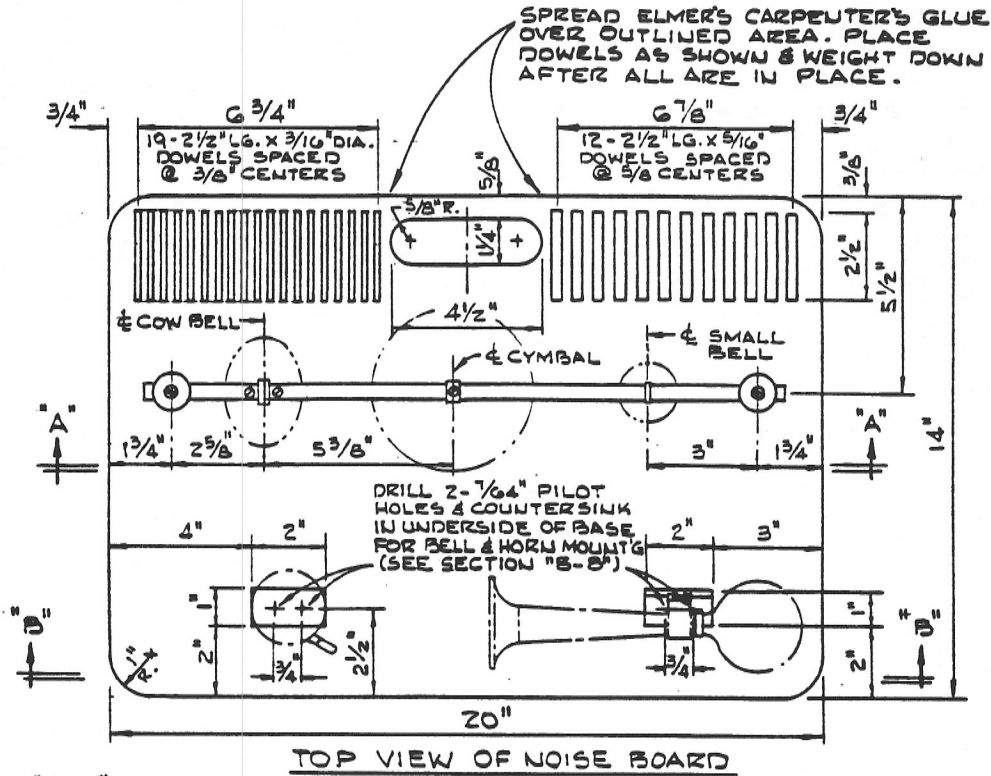
On the large piece of 3/8" plywood, make a layout as detailed on page 4. Using a 5/8" hand drill bit, drill two holes for the hand hole half way through from each side to assure a smooth cut. Then cut the remainder of the hand hole and the corner curves with a saber saw. Sand all edges smooth.

With the 3/16" and the 5/16" dowels in their full uncut length, sand a flat area on each lengthwise, then cut to length, all as shown on page 5.

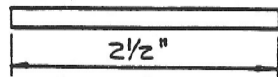
Glue the flattened and cut dowel pieces in the outlined areas as detailed on page 4.

Cut, drill and install the bell and cymbal holding dowels as detailed on page 4, Section "A-A". Mount the bell and the horn as detailed on page 4, Section "B-B".

Apply two coats of Varathane Gloss Varnish, or equal, to all wood areas, sanding lightly between coats.

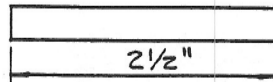


SAND FLAT FOR GLUING
APPROX. $\frac{1}{4}$ OF DOWEL DIA.

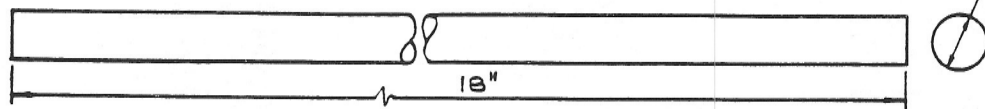


$\frac{3}{16}$ " DIA. DOWEL
(19 REQUIRED)

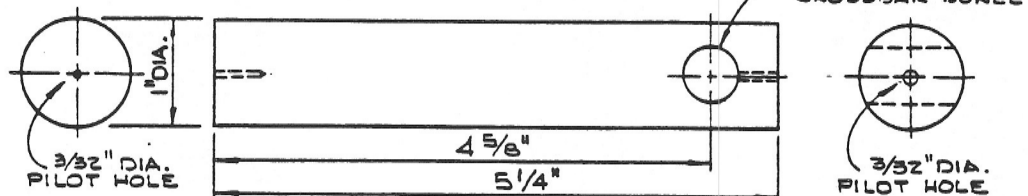
SAND FLAT ONE SIDE FOR GLUING
APPROX. $\frac{1}{4}$ OF DOWEL DIA.



$\frac{5}{16}$ " DIA. DOWEL
(12 REQUIRED)



CROSSBAR DOWEL
(FOR MOUNTING TWO BELLS & CYMBAL)



UPRIGHT DOWEL FOR CROSSBAR SUPPORT
(2 REQUIRED)

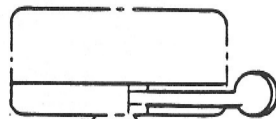
HARDWARE FOR MOUNTING HORN TO
 $\frac{3}{4}$ " DIA. DOWEL IS PROVIDED WITH HORN

SCHWINN TWO-TONE HORN
PART NO. 05005

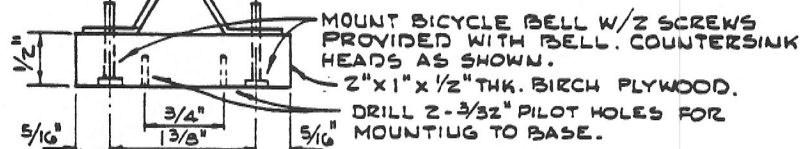
$\frac{3}{4}$ " DIA. X 2" LG. DOWEL
SECURE HORN TO DOWEL
AS YOU WOULD TO BICYCLE
HANDLE BAR..

2" X 1" X $\frac{1}{2}$ " THK. BIRCH
PLYWOOD.

DRILL 2- $\frac{3}{32}$ " PILOT HOLES
FOR MOUNTING TO BASE



HORN MOUNTING ASSEMBLY



BICYCLE BELL MOUNTING ASS'Y.