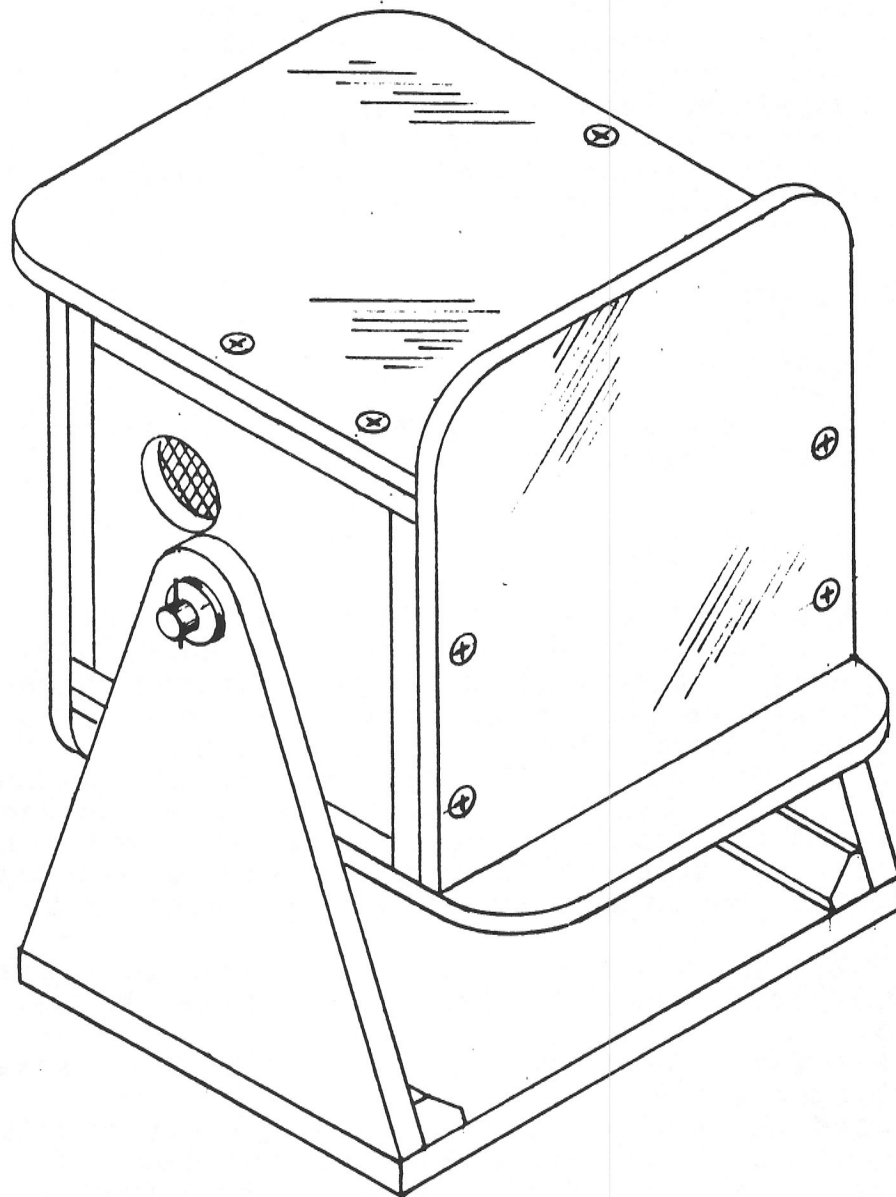


REFLECTION BOX

Unbreakable plastic mirrors on four sides of this box makes it fascinating to most children. It rotates easily with a push and the jingle bells inside provide auditory interest.



Materials needed:

- 3/8" birch plywood of several sizes as detailed on pages three and four, including the 5/8" x 5/8" x 6" corner braces sawn from two 3/8" strips glued together
- 3/8" diameter dowel x 8 5/8" long
- Two pieces of 1 1/2" x 1 1/2" window screen
- Four pieces of 1/4" thick plexiglas mirror, 7" x 7"
- Two pieces of 1/2" x #4 sheet metal screws
- Four washers with 3/8" center holes
- 16 1" x #6 flat head Phillips screws
- Elmer's Carpenter's Glue or equal
- 3/4" x #16 brads
- Varathane enamel in a bright color
- Non-skid material for bottom
- Contact cement or double-sided "Scotch" tape
- Anti-static plastic cleaner

Tools needed:

- Table saw
- Sander
- Drill press, 1 1/4" power bore bit, set of regular bits
- Ruler, brush, etc.

Construction suggestions:

Cut out pieces for the box and drill the end pieces for the dowel axle and for the 1 1/4" diameter holes. Staple the screen wire pieces on the inside over the end piece holes.

Using glue and brads, assemble the box, putting in the jingle bells just before the last box piece.

Drill and countersink the four holes on each of the four mirror pieces. Cut the curves on the mirror corners.

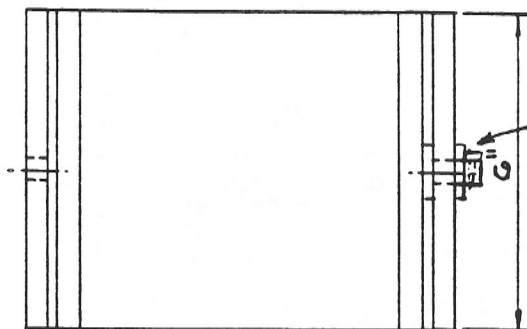
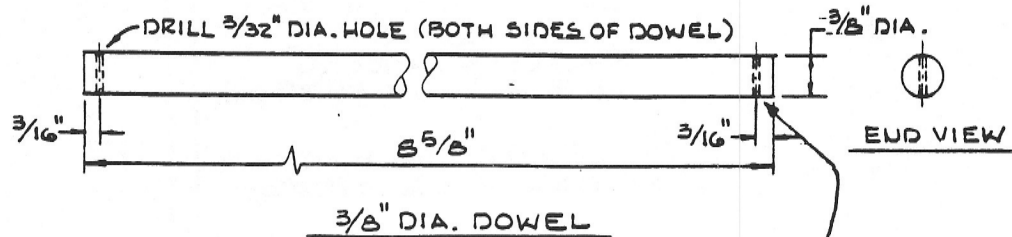
Paint the box ends two coats of a bright color. When the paint is dry, screw the four mirror pieces onto the box as shown on page 4. Use an anti-static plastic cleaner to eliminate the lint.

Cut out the stand pieces. Locate the axle hole in the upright pieces and drill the 3/8" diameter holes. Sand all the pieces.

Assemble the stand as shown on page 1 and give it two coats of a bright color.

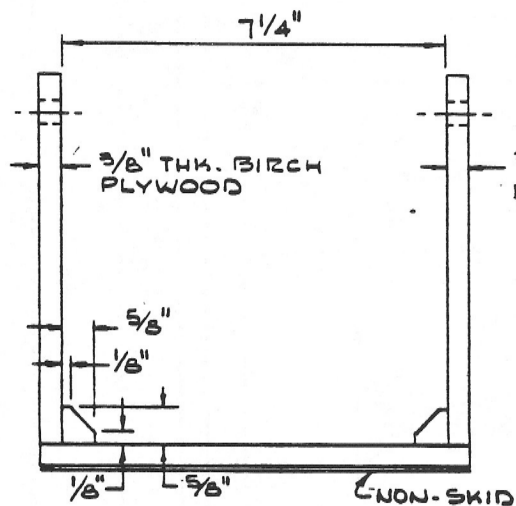
Sand the 3/8" x 8 5/8" dowel to permit it to be put through the 3/8" holes in the stand and the box. Drill the 3/32" diameter hole 3/16" from the ends of the dowel.

Assemble the box, stand, washers, and dowel as shown on page one. Screw a 1/2" x #4 sheet metal screw into each end of the dowel/axle to hold everything in place.

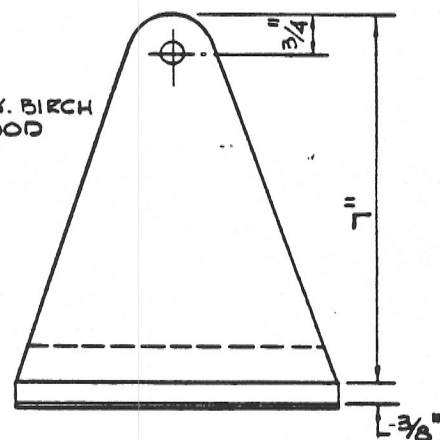


TOP VIEW

AFTER ASSEMBLY OF DOWEL, BOX, WASHERS, AND STAND, SCREW $\frac{1}{8}$ " x #4 SHEET METAL SCREWS INTO HOLES AT DOWEL ENDS.

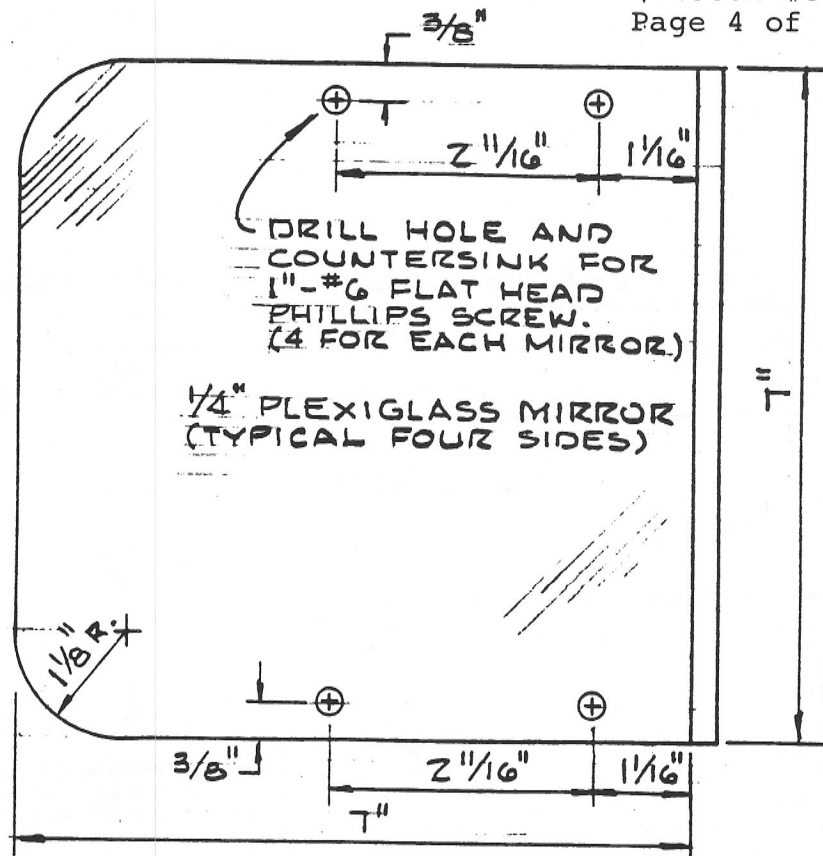


FRONT VIEW



SIDE VIEW

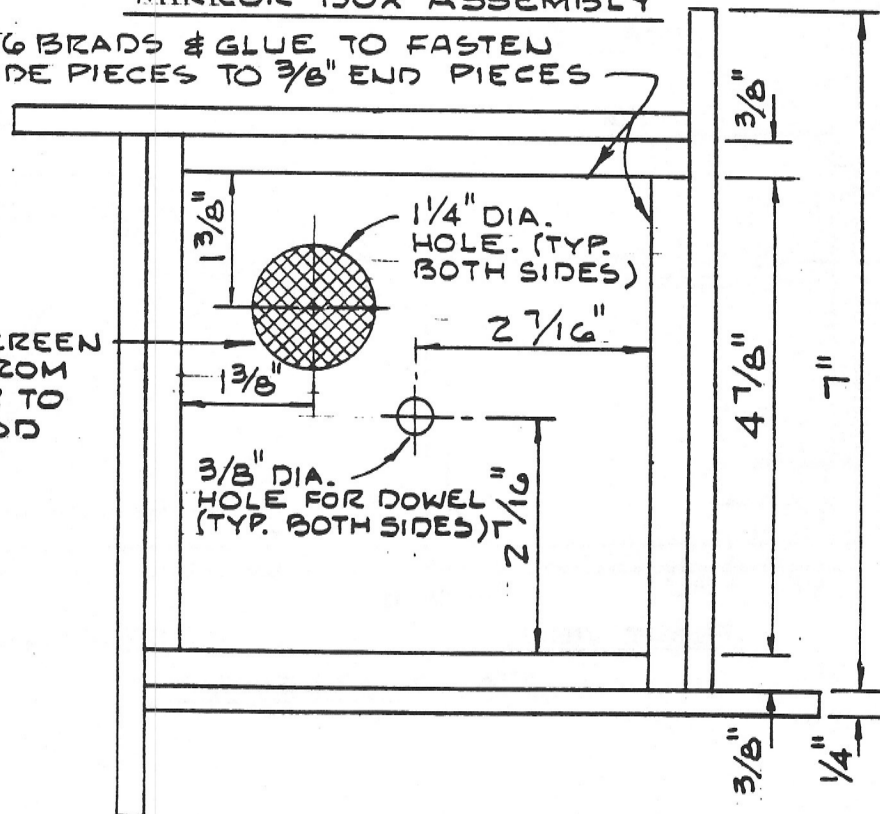
STAND ASSEMBLY



TOP VIEW OF MIRROR BOX ASSEMBLY

USE 3/4" x #16 BRADS & GLUE TO FASTEN 3/8" THK. SIDE PIECES TO 3/8" END PIECES

#16 MESH SCREEN STAPLED FROM INSIDE BOX TO 3/8" PLYWOOD



SIDE VIEW OF MIRROR BOX ASSEMBLY