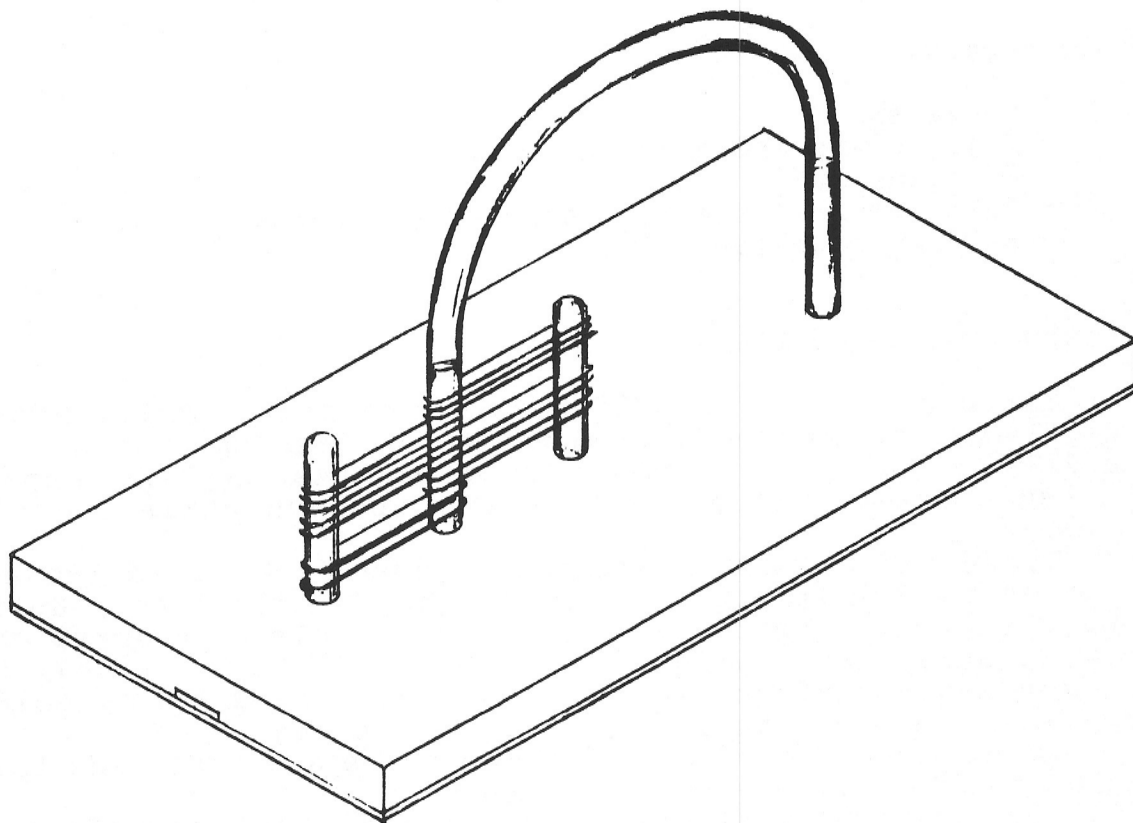


### STRETCHY BANDS

A dozen colored elastic bands for ponytails can be moved over a golden arch or stretched over pegs in many interesting combinations.



## Materials needed:

- A dozen "Braided elastic ponytail holders" from Goody brand #9885, or equal (from drug store or grocery)
- About 15 1/4" of 3/8" O.D. and 1/4" I.D. Tygon tubing
- Two 2 3/8" x 3/8" diameter dowels, rounded on one end
- Two 2 5/8" x 1/4" diameter dowels
- Varathane enamel in three bright colors
- 5/8" thick x 12" x 6" birch plywood
- 1/8" x 12" x 6" non-skid material
- Staples, Elmer's Carpenter's Glue

## Tools needed:

- Table saw
- Drill press and a set of bits
- Stapling gun
- Paint brush (if spray cans are not used)
- Sandpaper, ruler, etc.

## Construction suggestions:

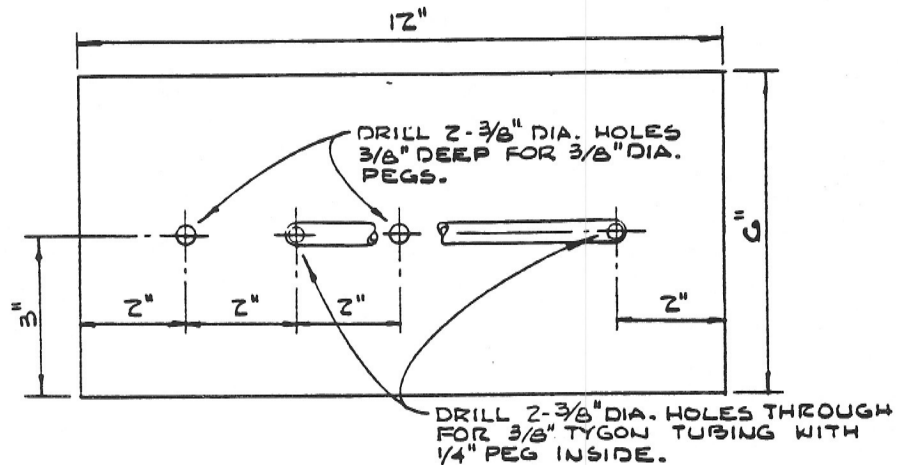
Cut the 12" x 6" x 5/8" plywood to size. Drill holes of size, location, and depth as noted on the drawing on page 3. Cut the 1/16" x 5/8" groove lengthwise of the base center. Note that the peg holes do not go all the way through while the tubing holes do.

Tygon tubing is recommended because it is "food grade" and safe for a child to put into her mouth. Cut the Tygon tubing to length and, holding one end up to the nozzle of a spray can of enamel, spray the inside of the tubing. This takes only a few seconds and transforms a plain piece of tubing into a colorful toy part. Hang the tubing up to dry for a day or so.

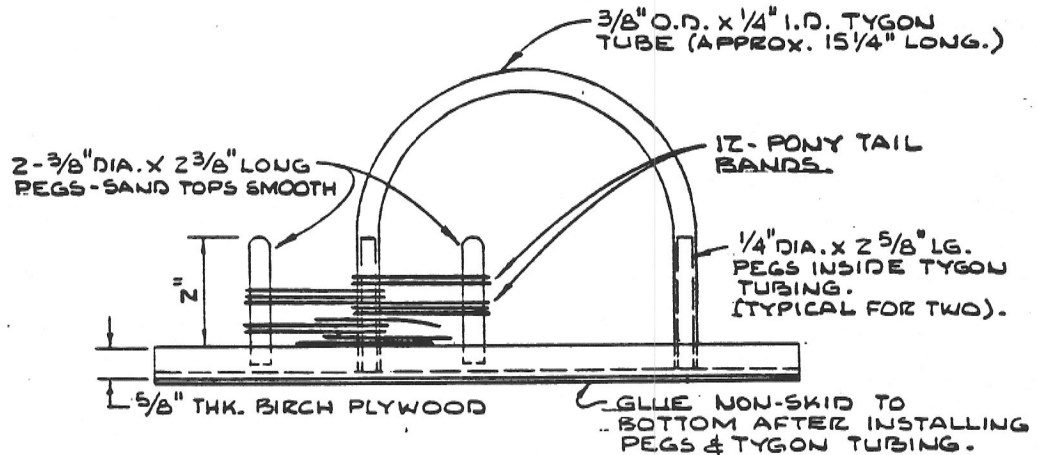
Paint the 12" x 6" x 5/8" plywood top and sides and the two 2 3/8" x 3/8" dowels with bright colors.

When everything is dry, glue the 3/8" dowels in place. Put the 12 ponytail bands over the tubing and put the ends of the tubing through their holes in the board. Slit the tubing ends 1/2" lengthwise and staple the split ends into the slot as shown in the drawing on page 3. Slide the 1/4" diameter x 2 5/8" long dowels up into the tubing and put a staple across the ends of the tube. This last dowel gives the tubing a needed rigidity.

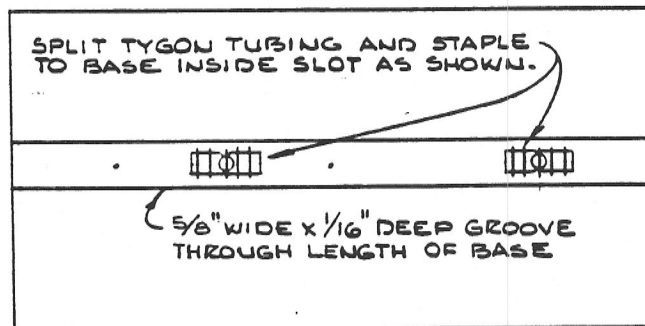
Cover the bottom with a non-skid material using double-sided tape or contact cement.



TOP VIEW



FRONT VIEW OF STRETCHY BANDS TOY



BOTTOM VIEW  
(SHOWN WITHOUT NON-SKID)