

TRICYCLE PEDAL ADAPTERS

The purpose of these pedal adapters is to hold a child's feet firmly on the pedals of a tricycle, making it easier for the child to ride independently. They will fit almost any pedal, are simple to install, and are convenient to use.

Materials needed:

- 3/8" thick birch plywood
- Shellac or varnish
- 1" wide webbing (obtain from a fabric store)
- 1" wide velcro, both hook and loop (fabric store)
- 1/4" T-50 staples
- 3/16" washers
- 3/16" lock washers
- 3/16" wing nuts
- 3/16" x 2" carriage bolts
- 1" x #17 brads
- Ziglock bags

Tools needed:

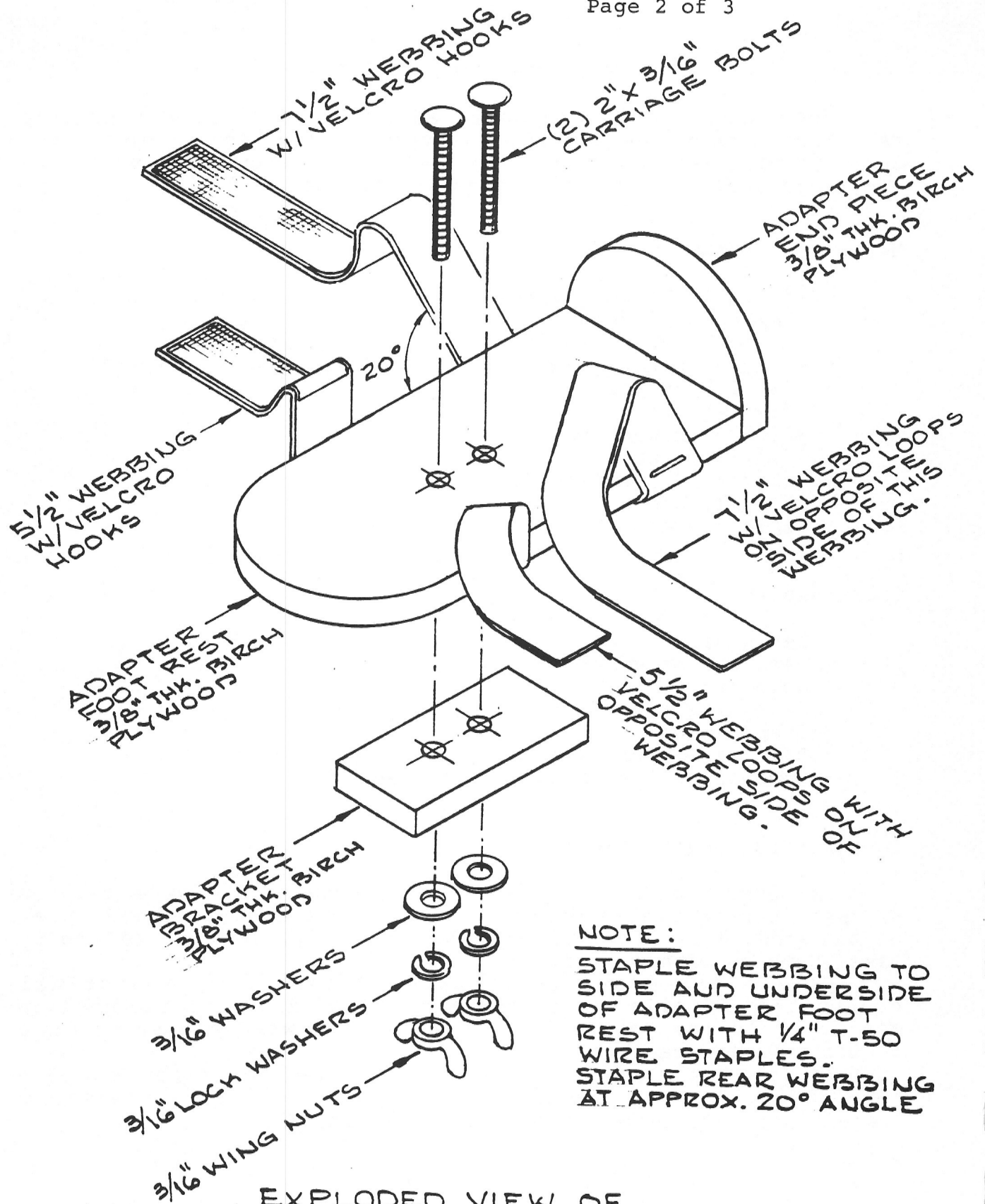
- Table saw
- Band saw or saber saw
- Scissors
- Sewing machine
- Staple shooter
- 3/16" drill bit and power drill
- Compass, ruler, brush, sandpaper, etc.

Construction suggestions:

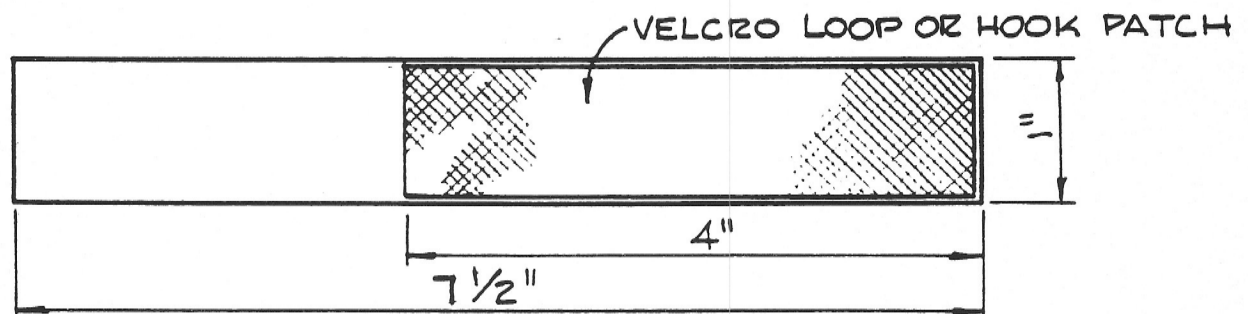
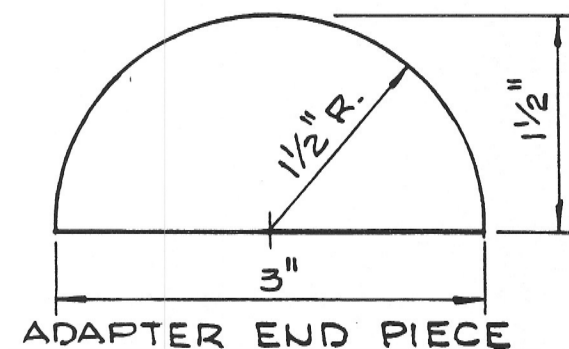
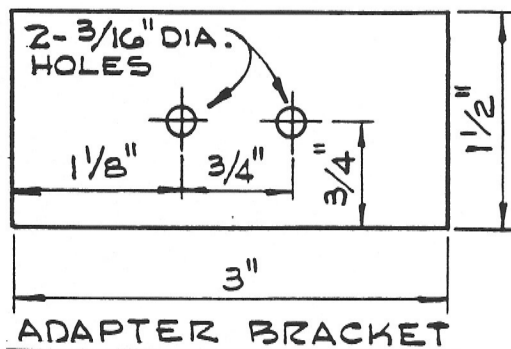
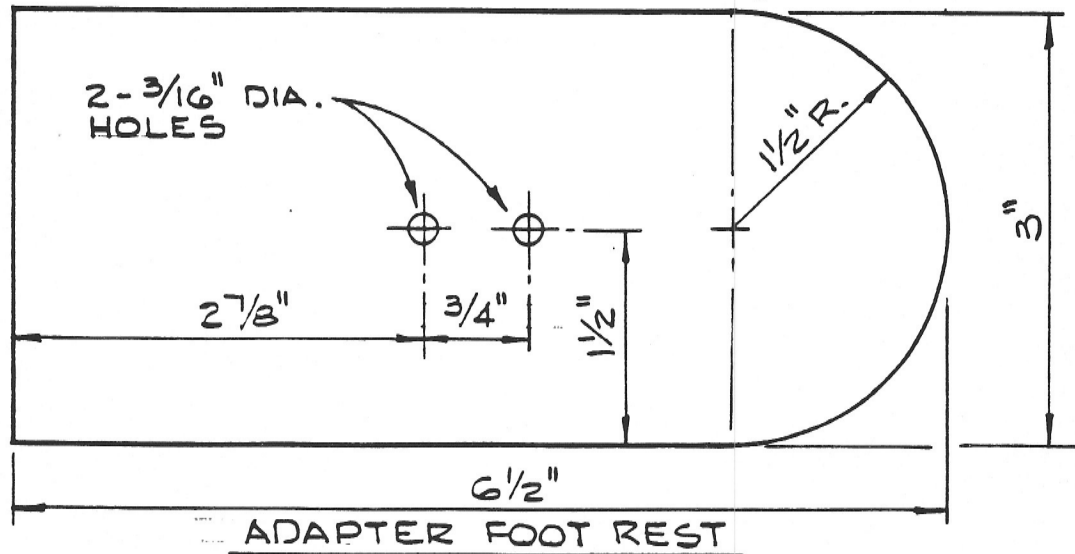
It seems logical to make up these pedal adapters in batches of, say, ten or twelve pairs. It will take about 4 square feet of plywood, 4 1/2 feet of webbing, and 2 1/2 feet of velcro to make 10 pairs of pedal adapters.

Follow the drawings on pages 2 and 3, as almost all construction details are noted there. Glue and nail the heel or end piece to the foot piece. Shellac the wood pieces to make them somewhat cleanable.

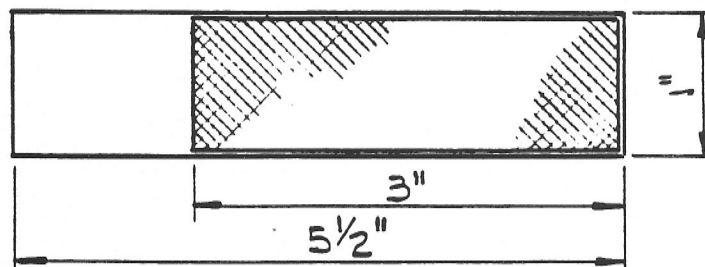
It is a good idea to put all the finished parts for one pair into a ziplock bag, including a copy of the assembly diagram (page 2) to assist in assembly onto the pedals.



EXPLODED VIEW OF
TRICYCLE PEDAL ADAPTER



1" WEBBING (2 REQUIRED) ONE W/VELCRO
LOOP PATCH, ONE W/HOOK PATCH SEWN TO WEBBING



1" WEBBING (2 REQUIRED)
ONE W/VELCRO LOOP PATCH
ONE W/VELCRO HOOK PATCH
SEWN TO WEBBING